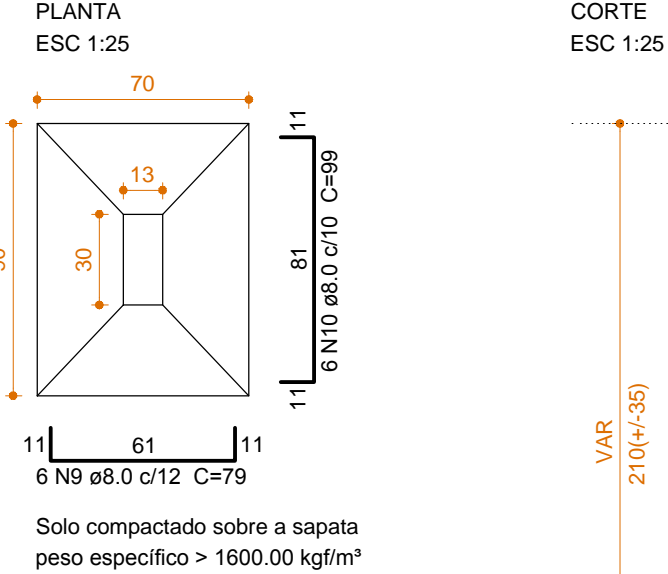
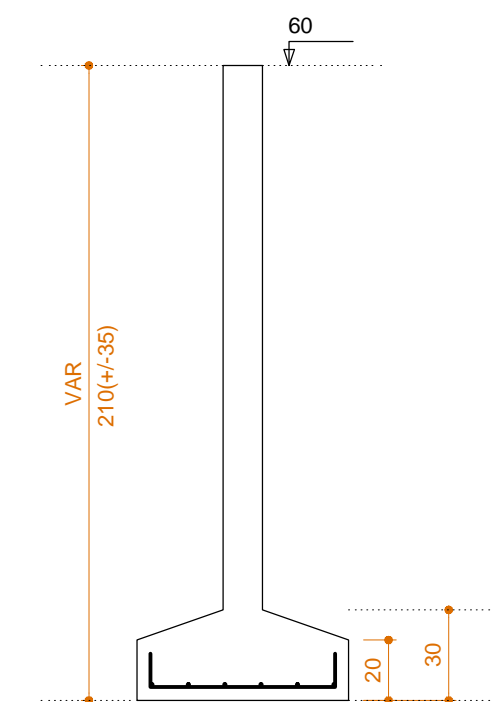


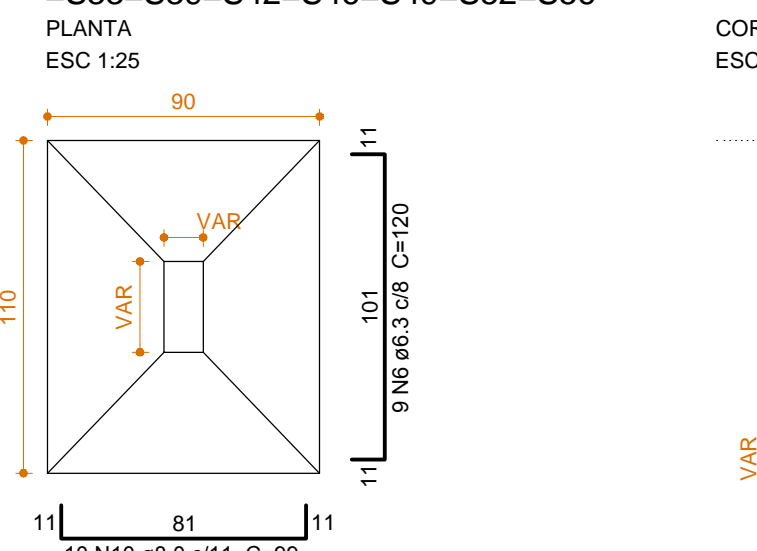
S1=S2=S9=S26=S41=S48=S57=S58



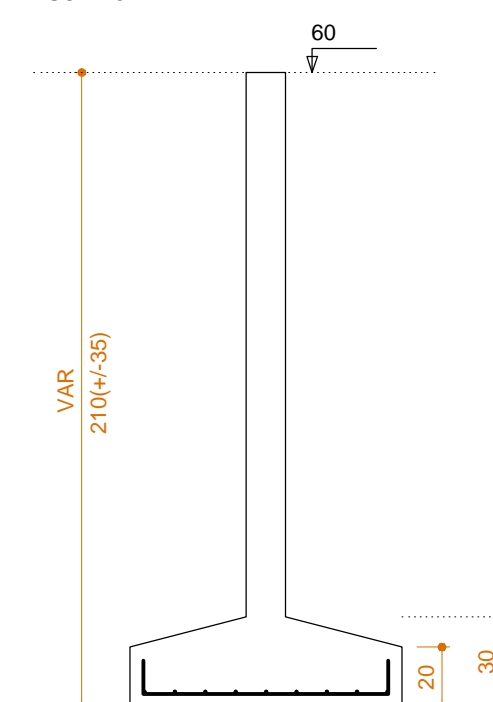
CORTE
ESC 1:25



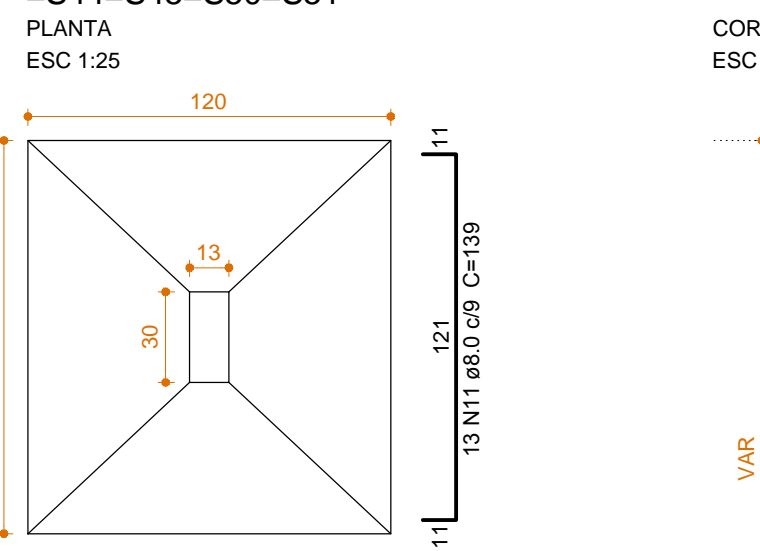
S3=S4=S5=S21=S22=S23=S25=S27=S28=S32
=S33=S39=S42=S46=S49=S52=S56



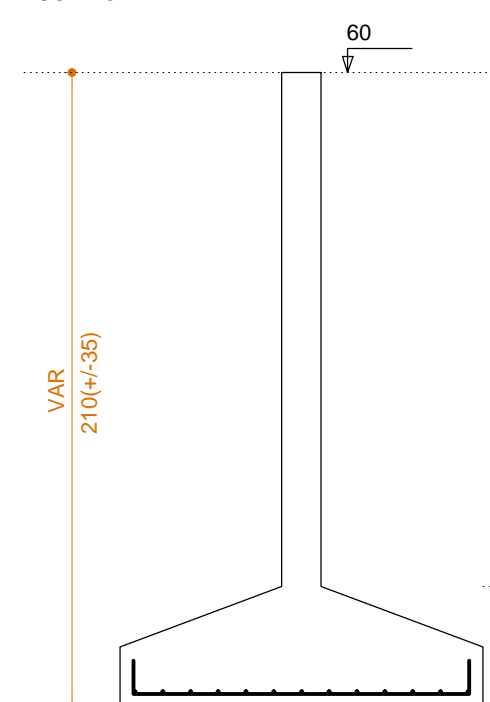
CORTE
ESC 1:25



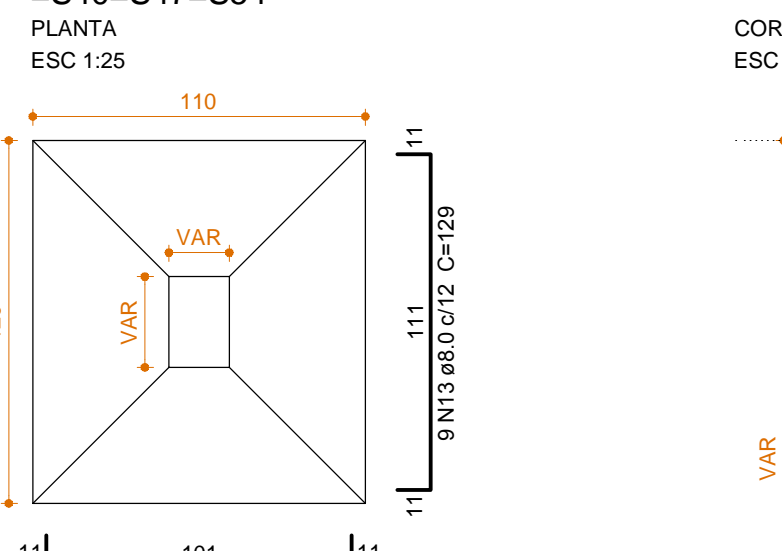
S6=S7=S10=S11=S17=S20=S29=S31=S36=S43
=S44=S45=S50=S51



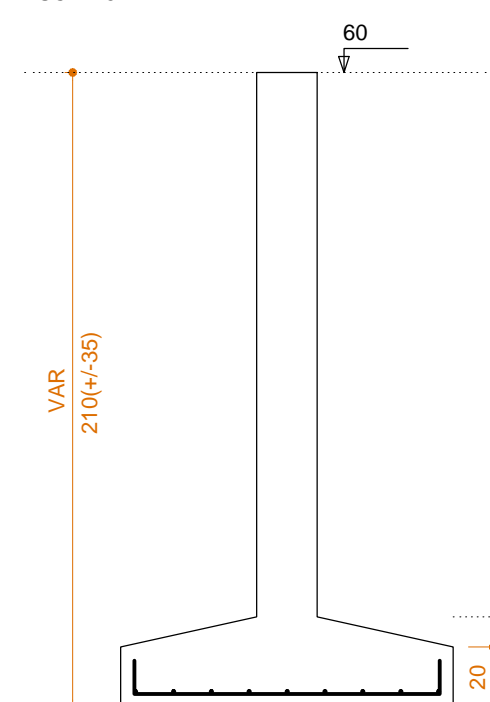
CORTE
ESC 1:25



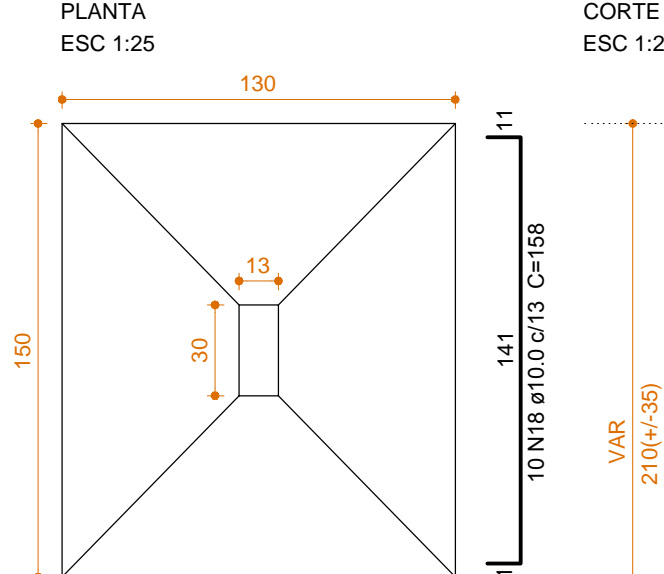
S8=S12=S13=S14=S15=S18=S19=S24=S34=S35
=S40=S47=S54



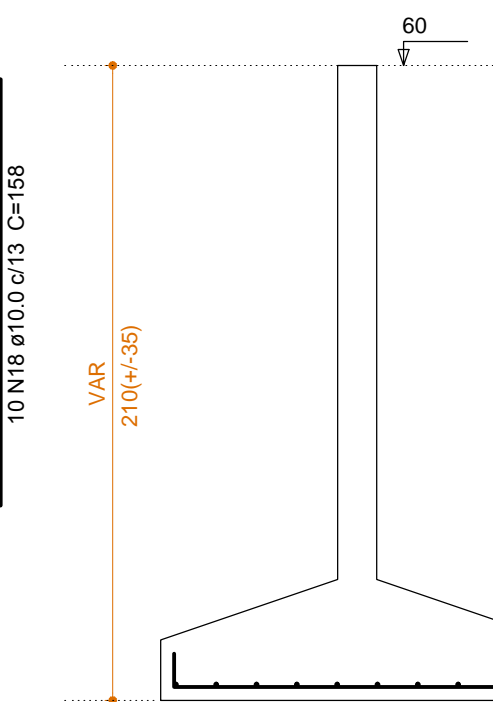
CORTE
ESC 1:25



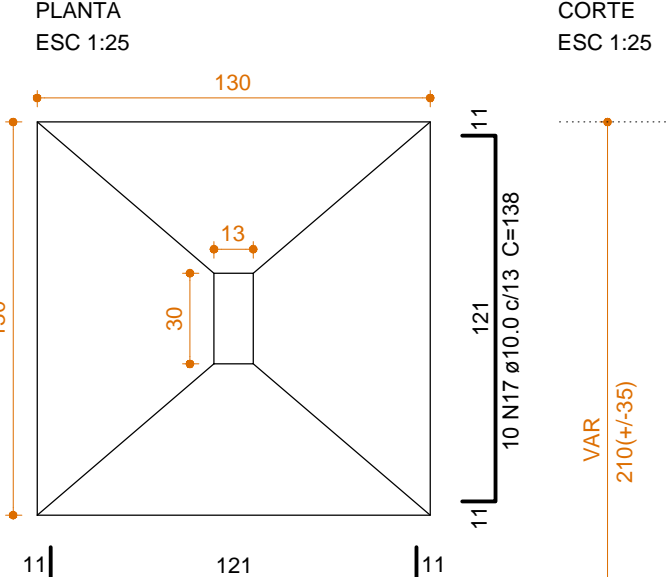
S16=S30=S37



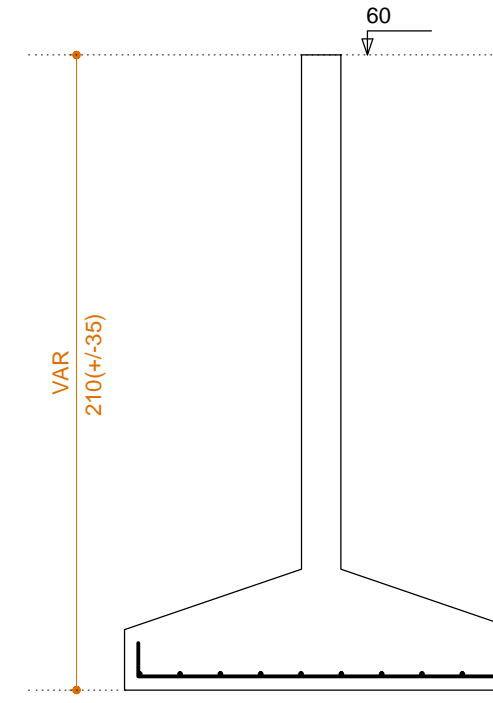
CORTE
ESC 1:25



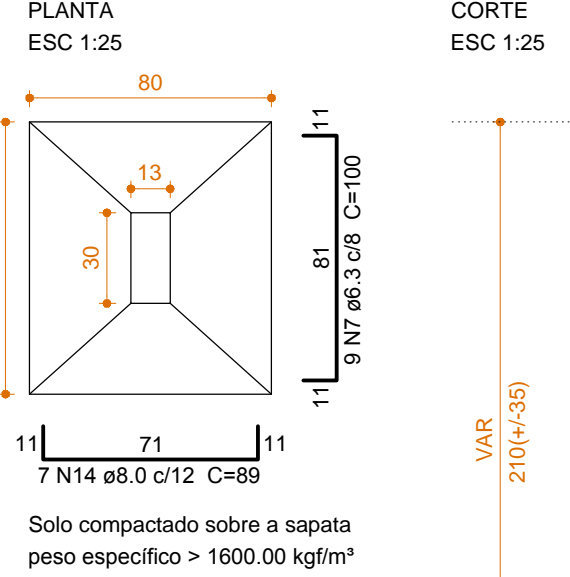
S38



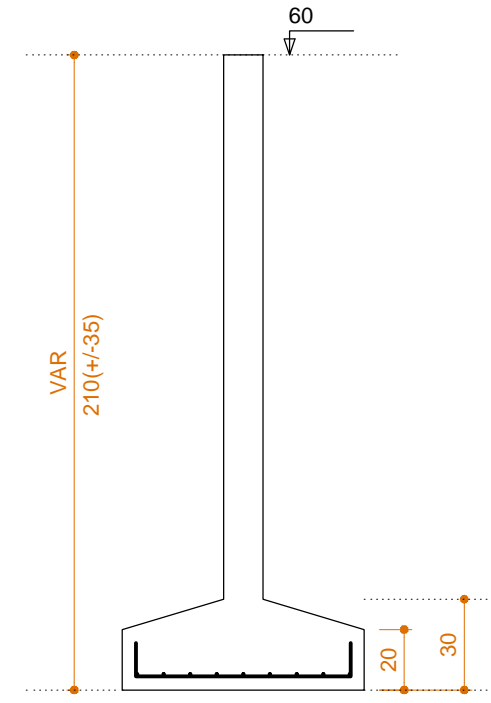
CORTE
ESC 1:25



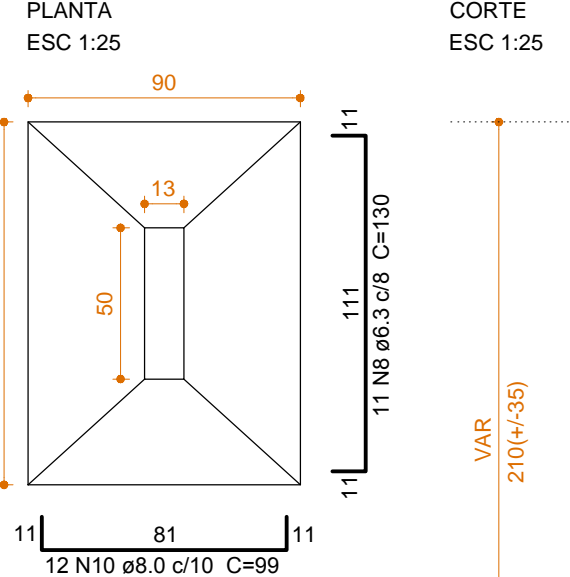
S53



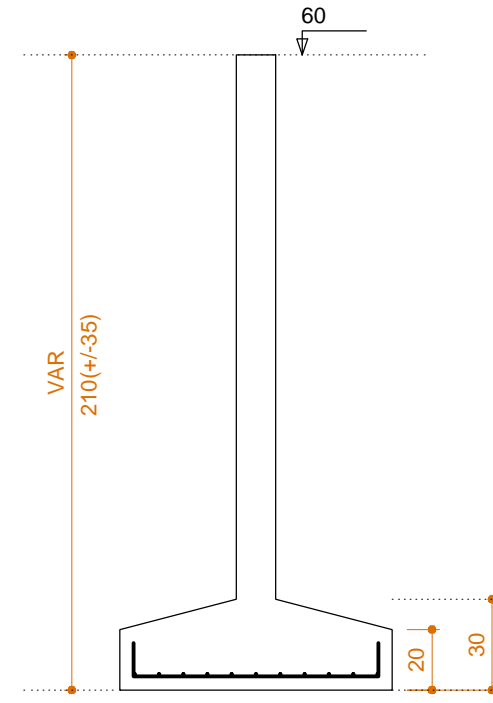
CORTE
ESC 1:25



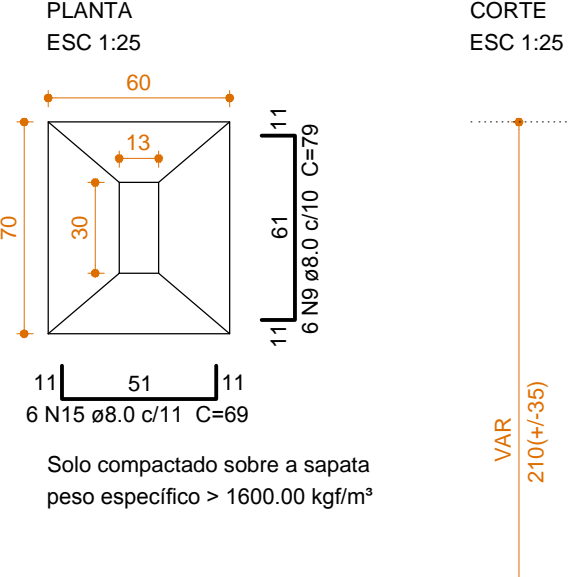
S55



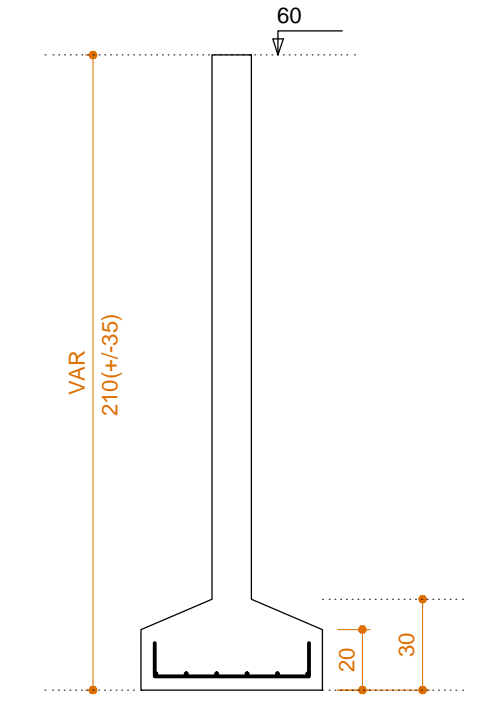
CORTE
ESC 1:25



S59=S60



CORTE
ESC 1:25



Relação do aço

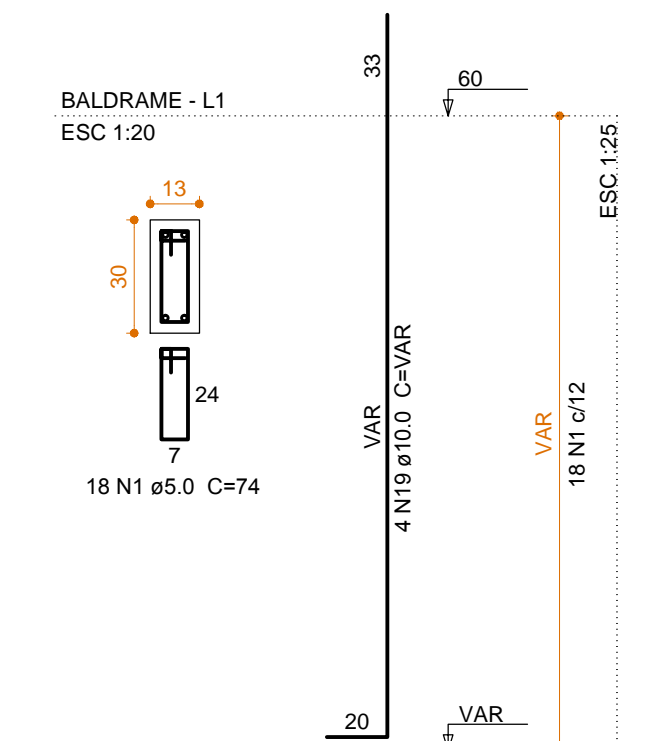
ACO	N	DIAM (mm)	QUANT	C.UNIT (cm)	C.TOTAL (cm)
CA60	1	5.0	1014	74	75036
	2	5.0	18	22	396
	3	5.0	153	22	3366
	4	5.0	18	88	1584
	5	5.0	34	114	3876
CA50	6	6.3	153	120	18360
	7	6.3	9	100	900
	8	6.3	11	130	1430
	9	8.0	60	79	4740
	10	8.0	230	99	22770
	11	8.0	182	139	25298
	12	8.0	143	119	17017
	13	8.0	117	129	15093
	14	8.0	7	89	623
	15	8.0	12	69	828
	16	10.0	140	128	17920
	17	10.0	59	138	8142
	18	10.0	30	158	4740
	19	10.0	170	VAR	VAR
	20	10.0	16	VAR	VAR
	21	12.5	76	VAR	VAR

Resumo do aço

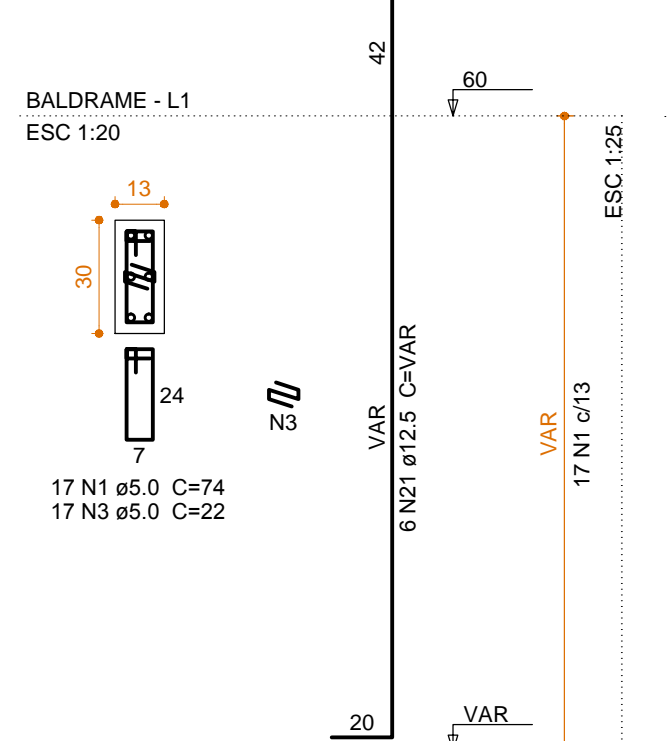
ACO	DIAM (mm)	C.TOTAL (m)	PESO + 10% (kg)
CA50	6.3	206.9	55.7
	8.0	863.7	374.9
	10.0	780.2	529.1
	12.5	201.4	213.4
CA60	5.0	842.6	142.9
PESO TOTAL			
CA50		1173.1	
CA60		142.9	

Volume de concreto (C-30) = 23.35 m³
Área de forma = 162.00 m²

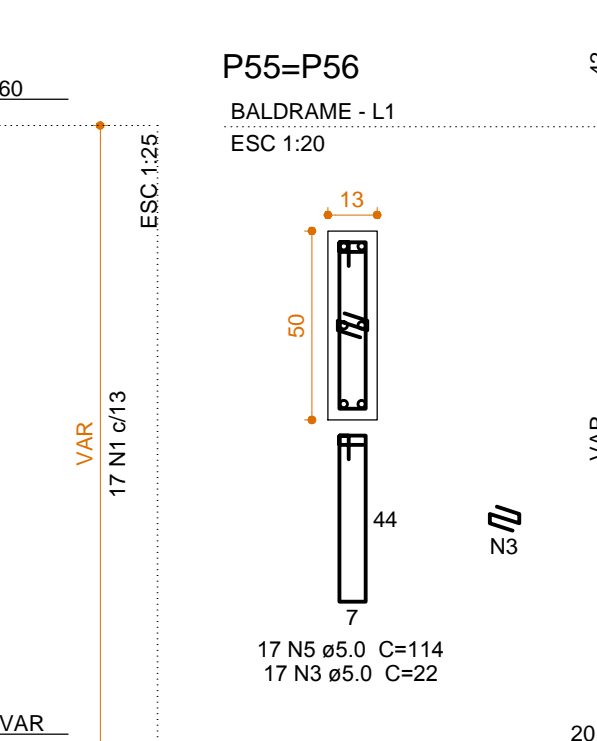
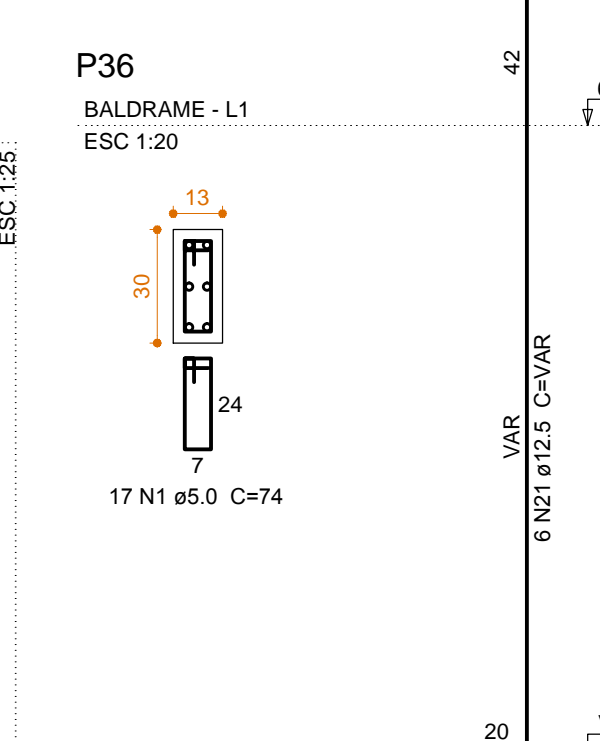
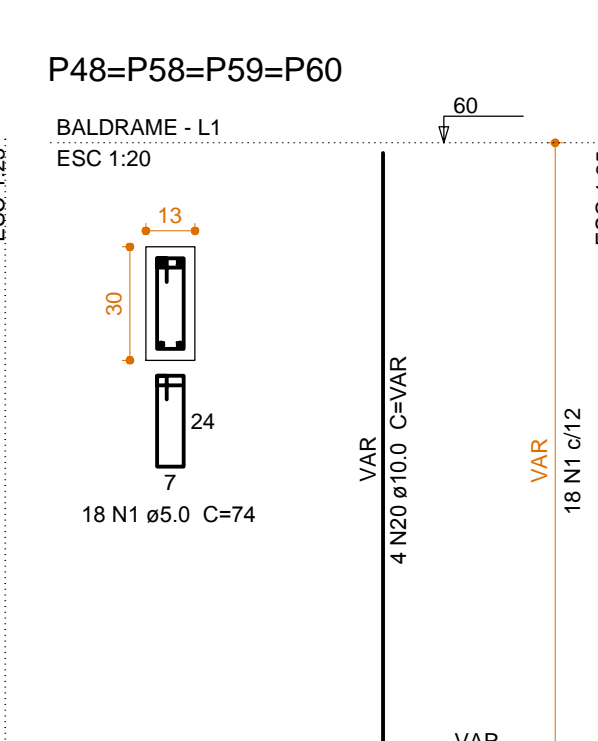
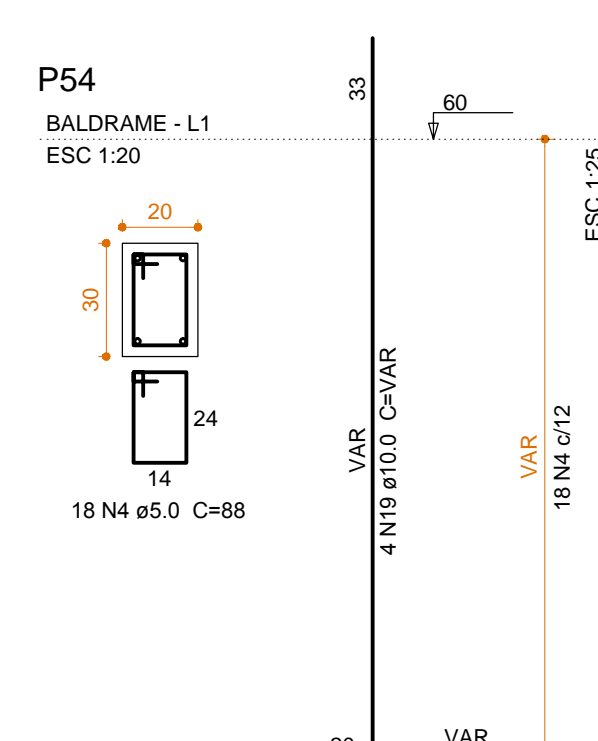
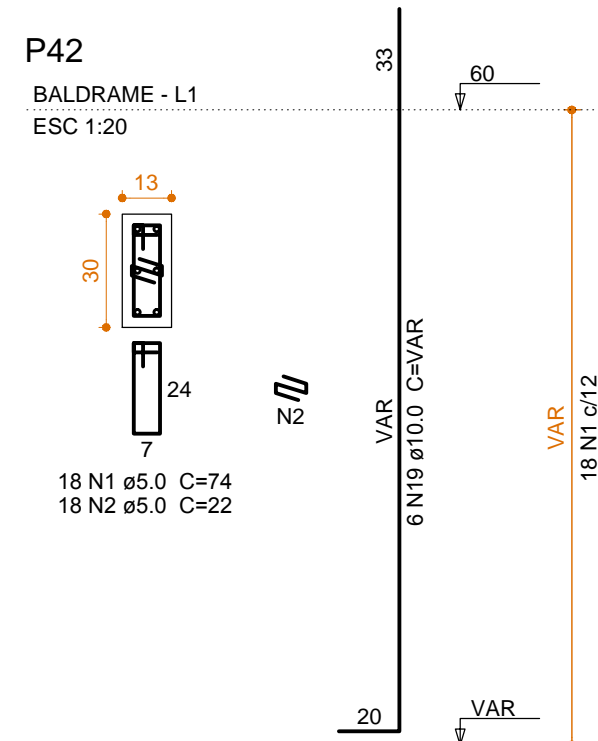
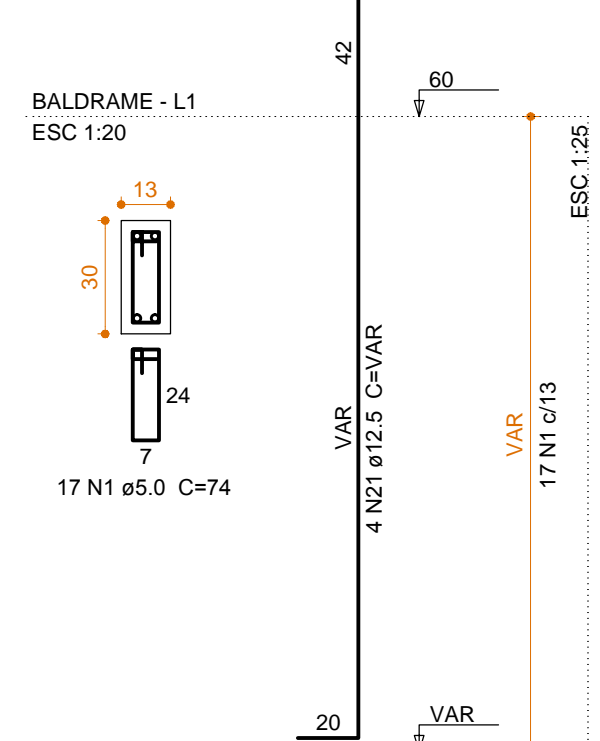
P1=P2=P3=P5=P7=P8=P9=P11=
=P12=P13=P14=P15=P16=P17=
=P18=P19=P20=P21=P22=P23=P24=
=P25=P26=P27=P28=P29=P30=P31=
=P32=P33=P37=P38=P39=P41=P43=
=P44=P45=P47=P52=P53



P4=P6=P10=P34=P35=P49=P50



P40=P46=P51=P57



Relação do aço

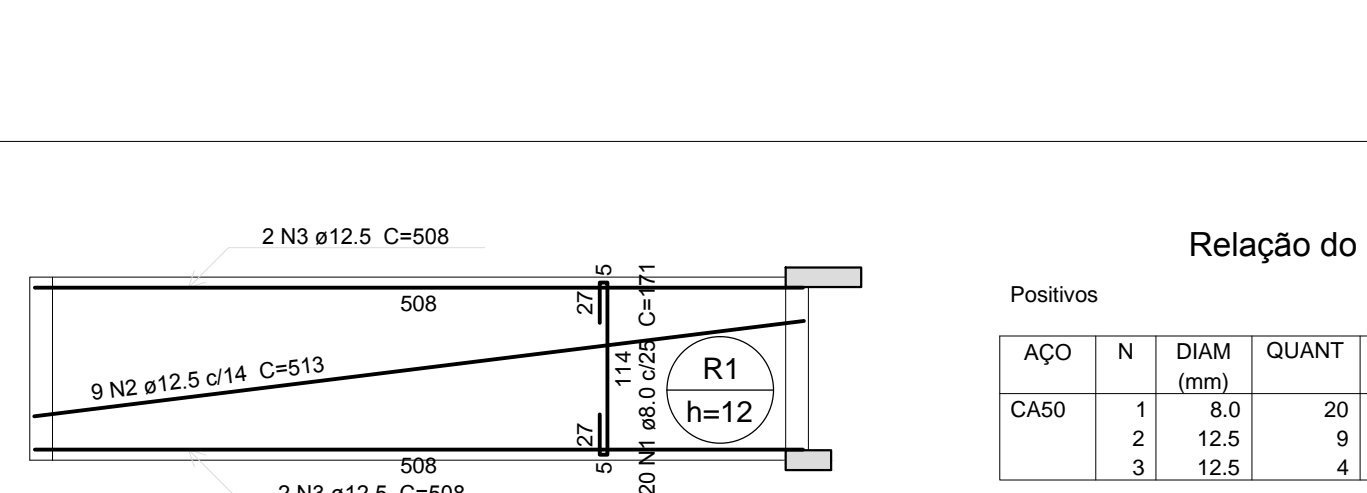
ACO	N	DIAM (mm)	QUANT	C.UNIT (cm)	C.TOTAL (cm)
CA60	1	5.0	25	134	3350
	2	5.0	8	VAR	VAR

Resumo do aço

ACO	DIAM (mm)	C.TOTAL (m)	PESO + 10% (kg)
CA60	5.0	67.9	11.5
PESO TOTAL			
CA60		11.5	

Volume de concreto (C-30) = 0.50 m³
Área de forma = 5.10 m²

ARMAÇÃO ESCADA
ESCALA 1:50



ARMAÇÃO RAMPA
ESCALA 1:50

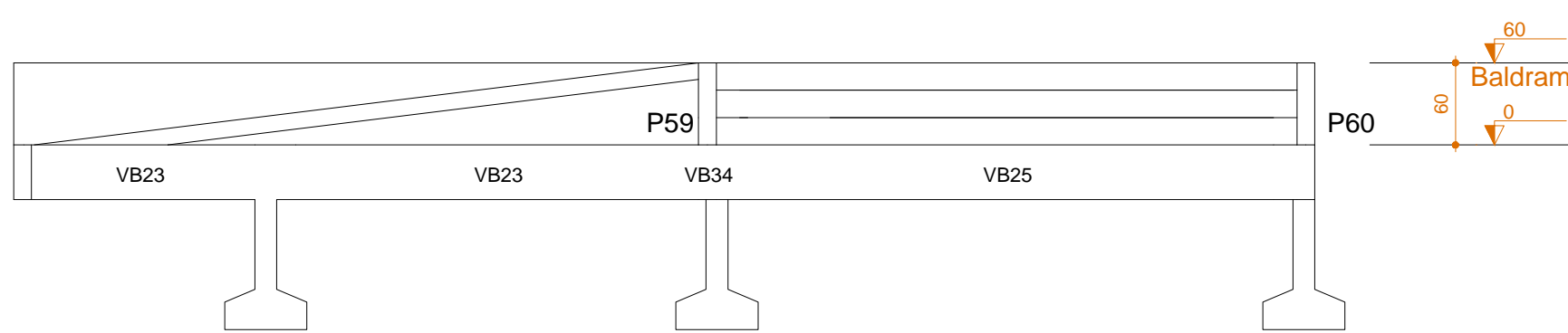
Relação do aço

ACO	N	DIAM (mm)	QUANT	C.UNIT (cm)	C.TOTAL (cm)
CA50	1	8.0	20	171	3420
	2	12.5	9	513	4617
	3	12.5	4	508	2032

Resumo do aço

ACO	DIAM (mm)	C.TOTAL (m)	PESO + 10% (kg)
CA50	8.0	34.2	14.8
	12.5	66.5	70.5
PESO TOTAL			
CA50		85.3	

Volume de concreto (C-30) = 0.70 m³
Área de forma = 7.15 m²



Revisão	Descrição	Data	Responsável
00	Emissão Inicial	17/10/2016	Marcelo Garcia
01	Revisão 01	02/03/2017	Marcelo Garcia
02	Revisão 02 (Mudança Sapatas)	24/04/2017	Marcelo Garcia

AMFRI - ASSOCIAÇÃO DOS MUNICÍPIOS DA REGIÃO DA FOZ DO RIO ITAJAI
Rua Luiz Lopes Gonzaga, nº 1655 - Bairro São Vicente - Itajaí-SC - CREA/SC nº 050968-0

Estado de Santa Catarina
Prefeitura Municipal de Bombinhas

Projeto: **ESTRUTURAL**
Unidade Básica de Saúde de Mariscal
Local: Avenida Diamante, esquina com Rua Ônix - Bairro Mariscal

Conteúdo da folha: Blocos e esperas, Armação escada, Armação rampa

Estática: Área do projeto 386,60m²

Responsável Técnico: Marcelo Garcia

Arquiteto e Urbanista: CAI 46884-0

Projeto: Outubro/2016
Escala: 1/50
Desenho: Eduardo
ART: 127097690/2017
Folha: 02/13

Ana Paula da Silva
Professora Municipal

Marcelo Garcia