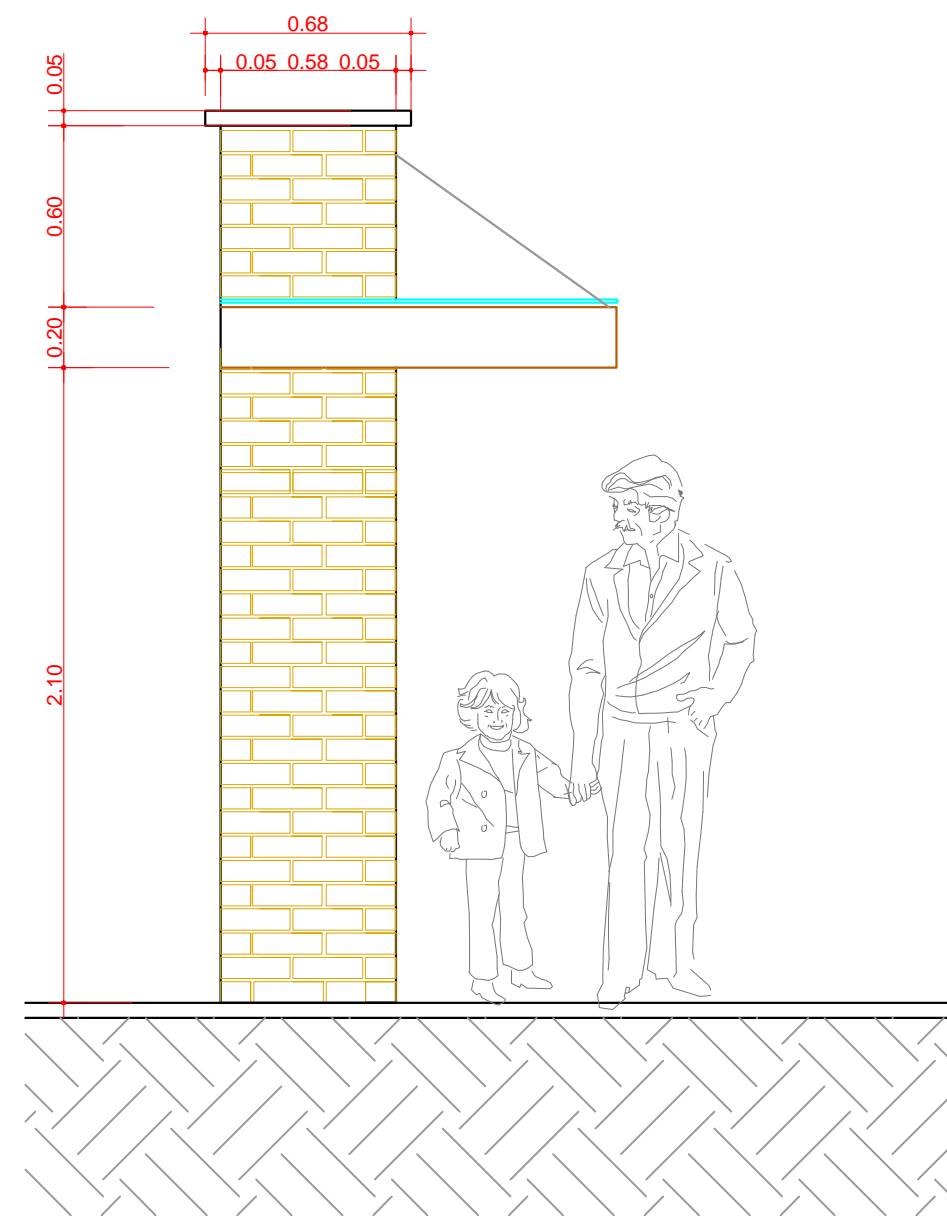
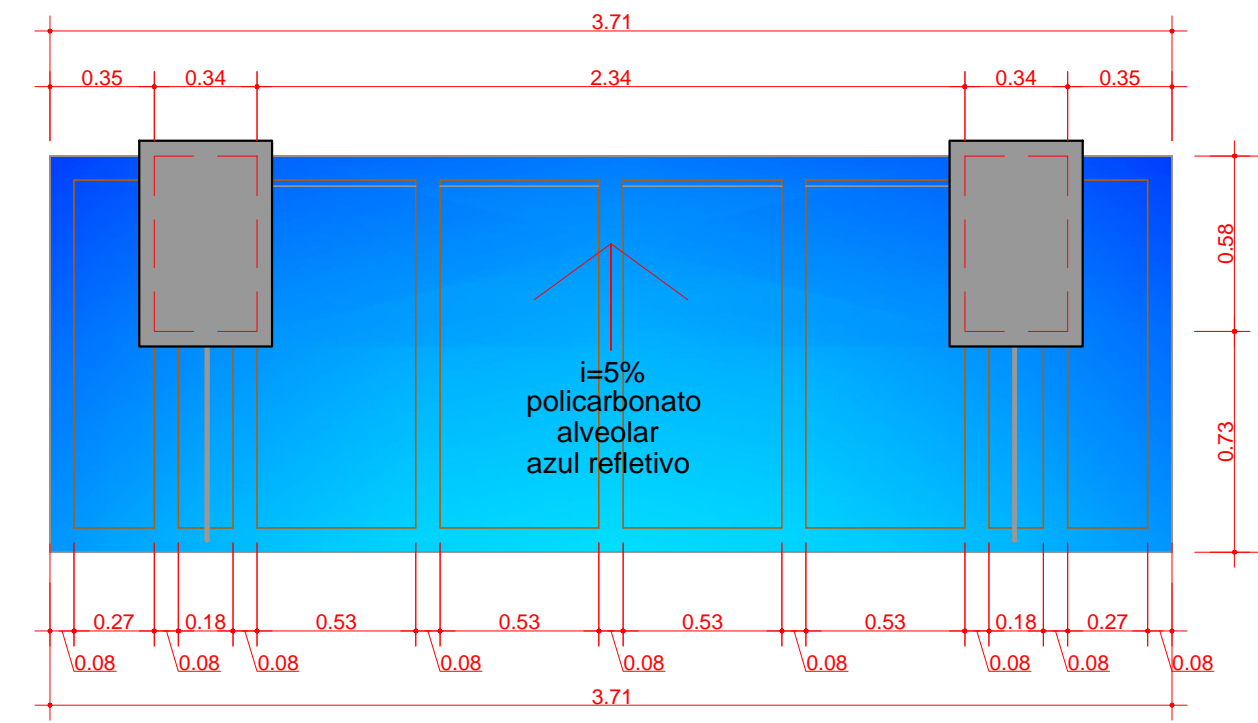


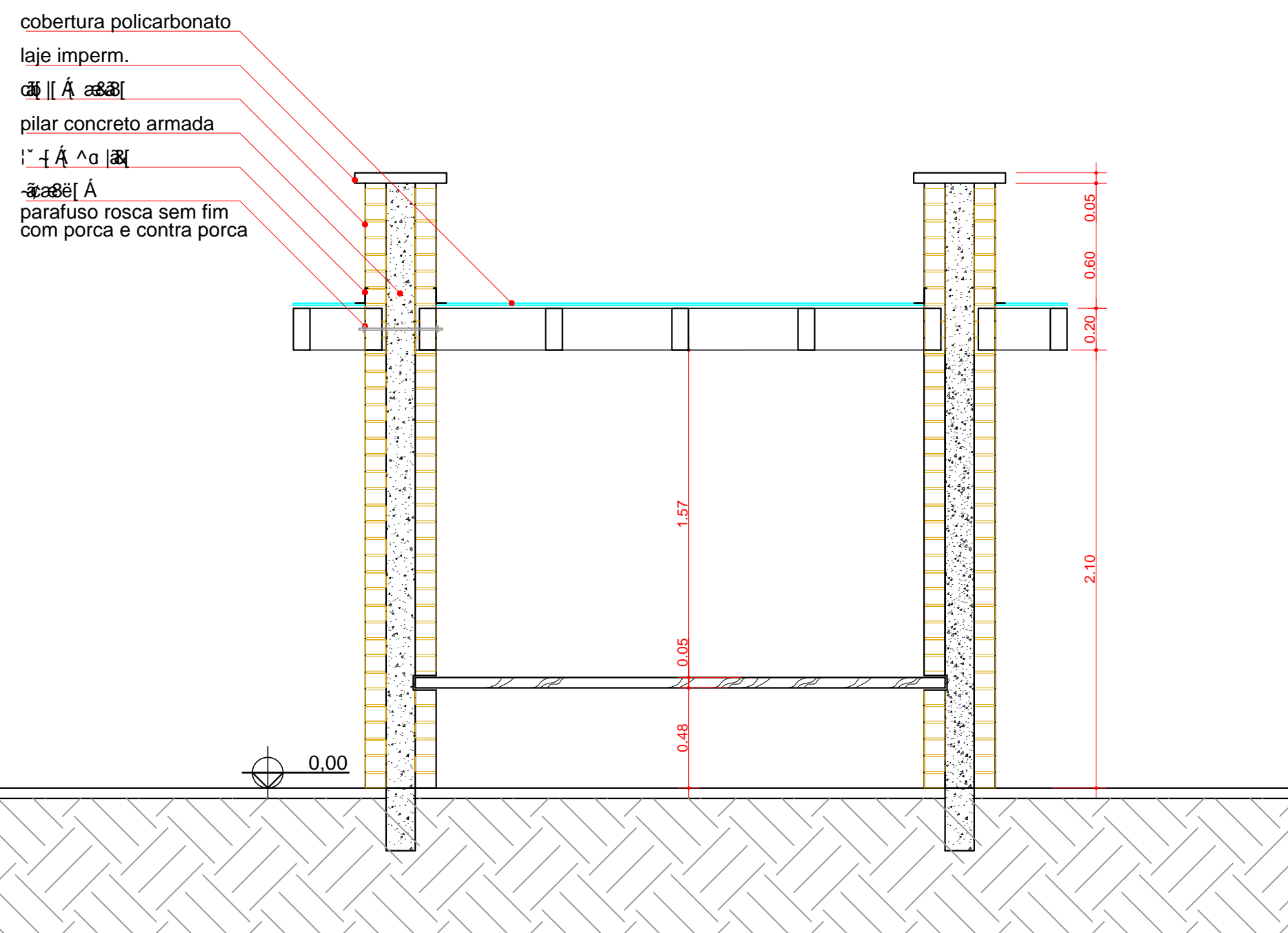
FRONTAL
ESCALA 1/25



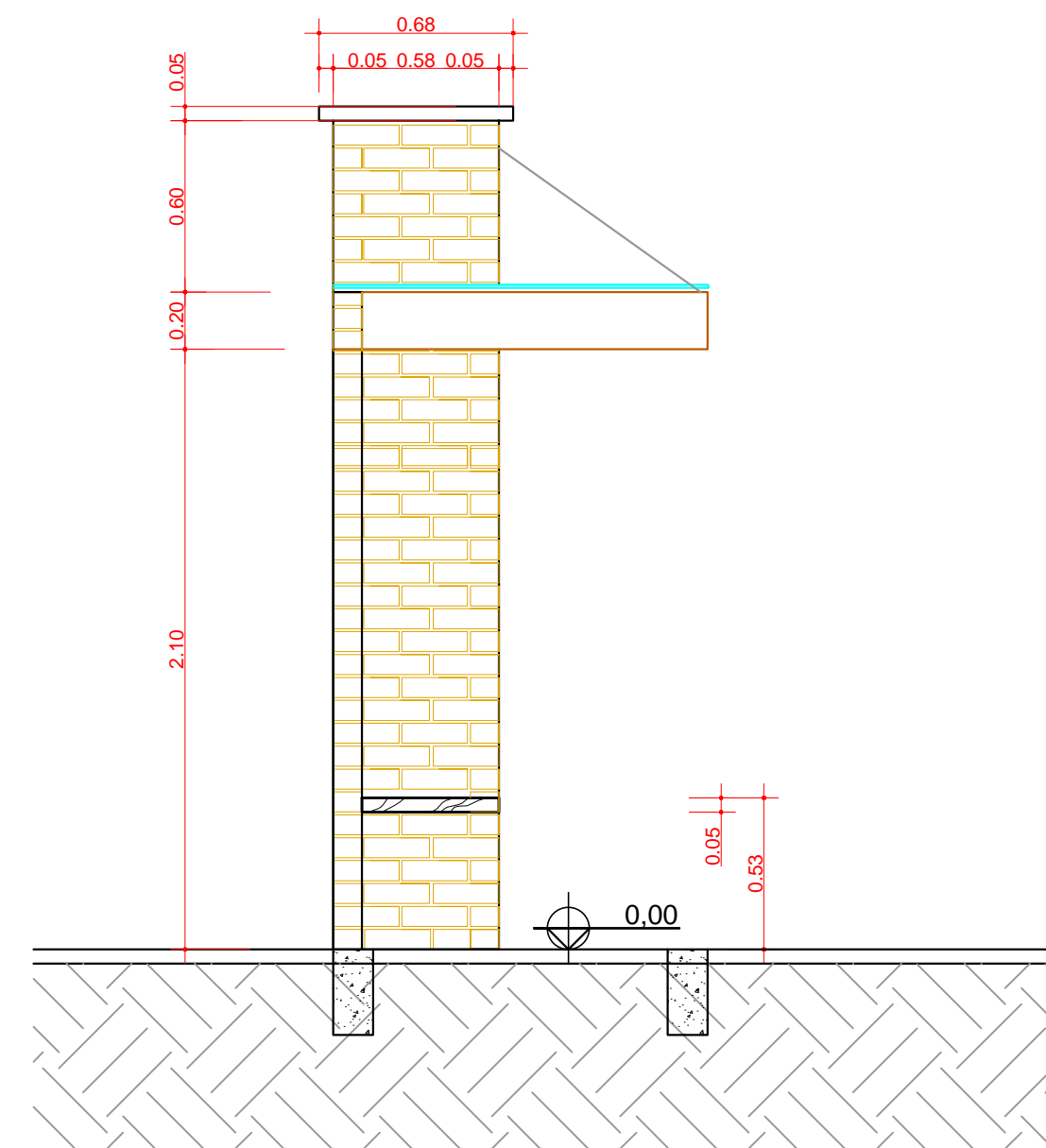
FACHADA LATERAL
ESCALA 1/25



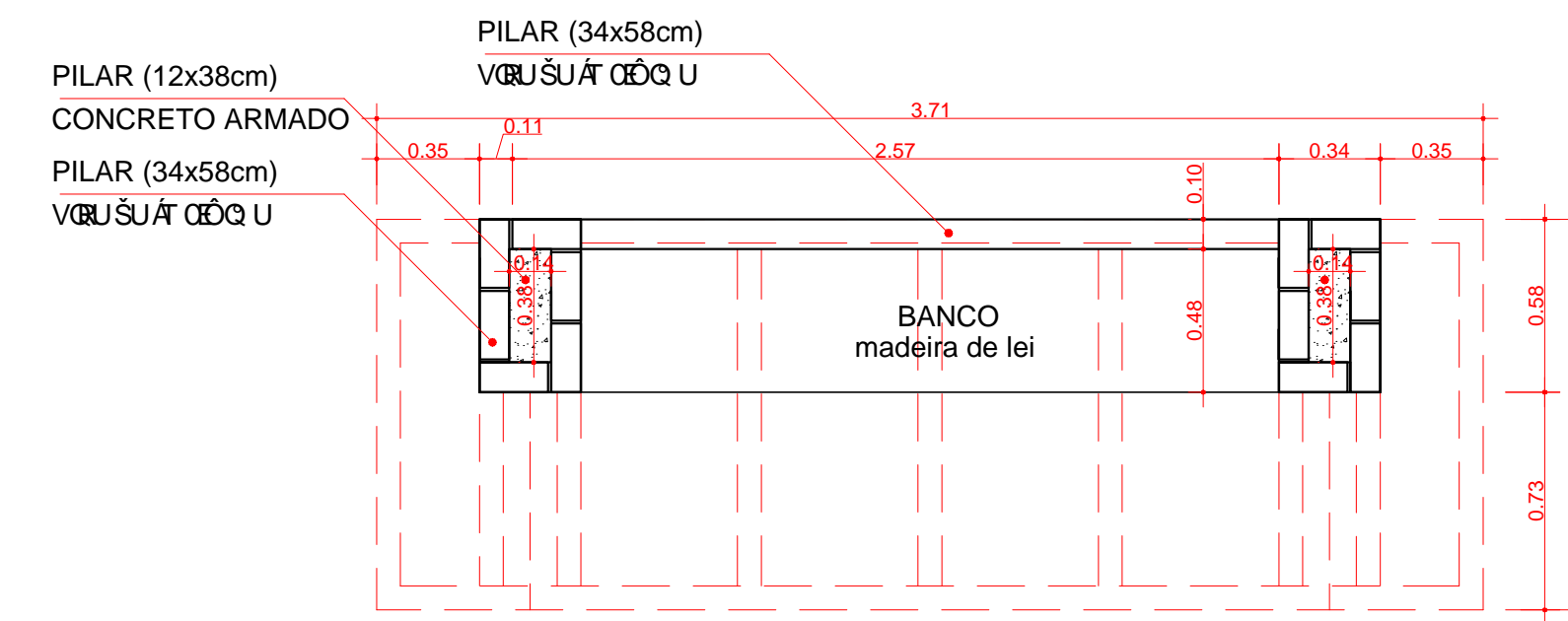
PLANTA de COBERTURA
ESCALA 1/25



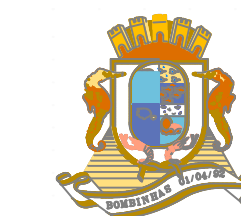
CORTE LONGITUDINAL
ESCALA 1/25



CORTE TRANSVERSAL
ESCALA 1/25



PLANTA BAIXA
ESCALA 1/25



PREFEITURA MUNICIPAL DE BOMBINHAS SECRETARIA DE PLANEJAMENTO E REGULACAO URBANA		ANA PAULA DA SILVA ARQUITETA	ARQUIVO 2016
PROJETO PONTO DE ONIBUS BOMBINHAS		FÁBIO TORQUATO SECRETARIA DE PLANEJAMENTO	DATA 22/02/2016
ESCALA 1/25	PRANCHAS UNIC.	JEAN RICARDO VIEIRA ARQUITETO	DESENHO JEAN VIEIRA