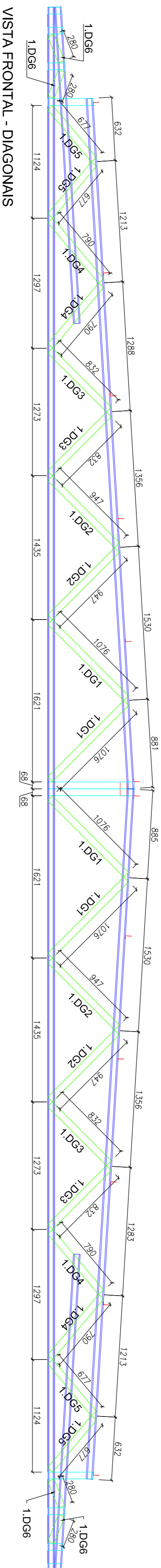


VISTA FRONTAL - BANZOS, MONTANTES e CANTONEIRAS

ITEM	TAG	PERFIL	COMP. (mm)	QUANT. (und.)
1	1.BZ11	UE 70	1925	2
2	1.MT12	TUBO UE 70	249	1
3	1.MT13	UE 70	188	1
4	1.DG13	UE 70	281	2
5	1.DG14	UE 70	235	2
6	1.DG15	UE 70	211	2
7	1.DG16	UE 70	183	2

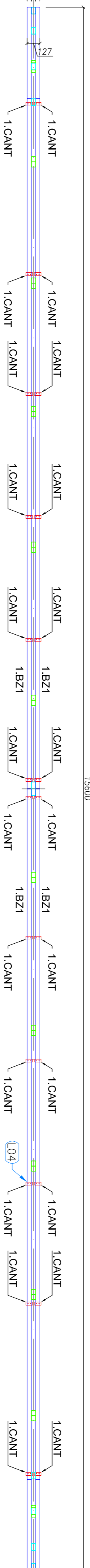
ITEM	TAG	PERFIL	COMP. (mm)	QUANT. (und.)
1	1.BZ11	UE 70	1925	2
2	1.MT12	TUBO UE 70	249	1
3	1.MT13	UE 70	188	1
4	1.DG13	UE 70	281	2
5	1.DG14	UE 70	235	2
6	1.DG15	UE 70	211	2
7	1.DG16	UE 70	183	2



VISTA FRONTAL - DIAGONAIS

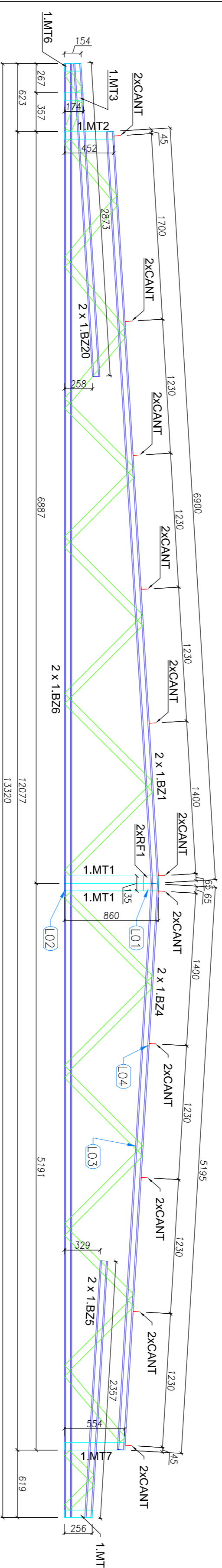
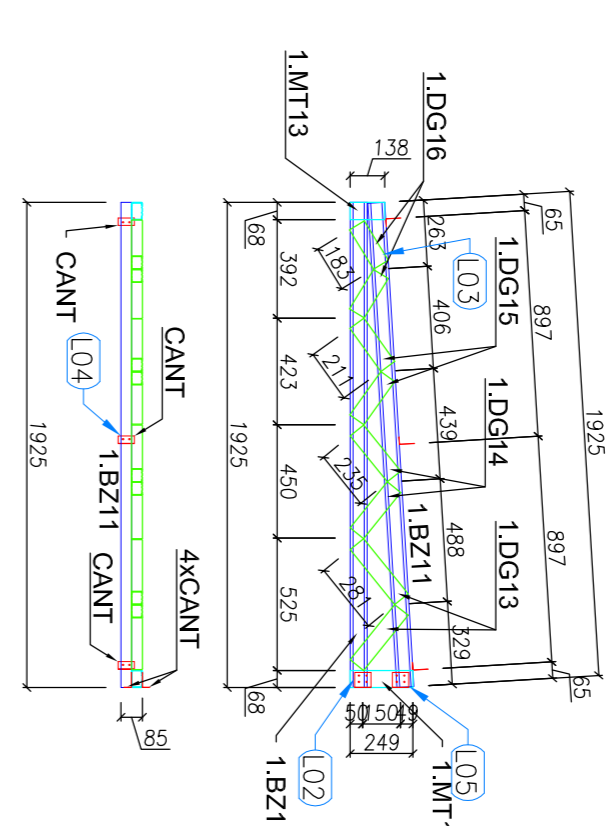
ITEM	TAG	PERFIL	COMP. (mm)	QUANT. (und.)
1	1.BZ1	UE 70	15600	4
2	1.BZ3	UE 70	3164	4
3	1.BZ5	TUBO UE 70	860	2
4	1.MT1	TUBO UE 70	174	2
5	1.MT2	TUBO UE 70	148	2
6	1.MT3	TUBO UE 70	136	2
7	1.MT4	TUBO UE 70	1076	4
8	1.MT5	TUBO UE 70	947	4
9	1.DG1	TUBO UE 70	832	4
10	1.DG2	TUBO UE 70	790	4
11	1.DG3	TUBO UE 70	677	4
12	1.DG4	TUBO UE 70	619	4
13	1.DG5	TUBO UE 70	5191	2
14	1.DG6	TUBO UE 70	280	4
15	1.DG6	TUBO UE 70	280	4

ITEM	TAG	PERFIL	COMP. (mm)	QUANT. (und.)
1	1.BZ1	UE 70	15600	4
2	1.BZ3	UE 70	3164	4
3	1.BZ5	TUBO UE 70	860	2
4	1.MT1	TUBO UE 70	174	2
5	1.MT2	TUBO UE 70	148	2
6	1.MT3	TUBO UE 70	136	2
7	1.MT4	TUBO UE 70	1076	4
8	1.MT5	TUBO UE 70	947	4
9	1.DG1	TUBO UE 70	832	4
10	1.DG2	TUBO UE 70	790	4
11	1.DG3	TUBO UE 70	677	4
12	1.DG4	TUBO UE 70	619	4
13	1.DG5	TUBO UE 70	5191	2
14	1.DG6	TUBO UE 70	280	4
15	1.DG6	TUBO UE 70	280	4

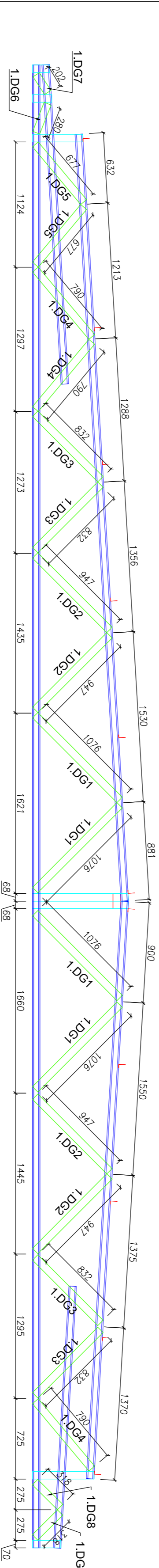


VISTA SUPERIOR - BANZOS, CANTONEIRAS e LUVAS

TS5 - (X02) SEM ESCALA



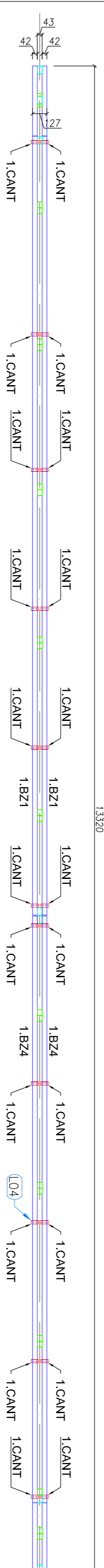
VISTA FRONTAL - BANZOS, MONTANTES e CANTONEIRAS



VISTA FRONTAL - DIAGONAIS

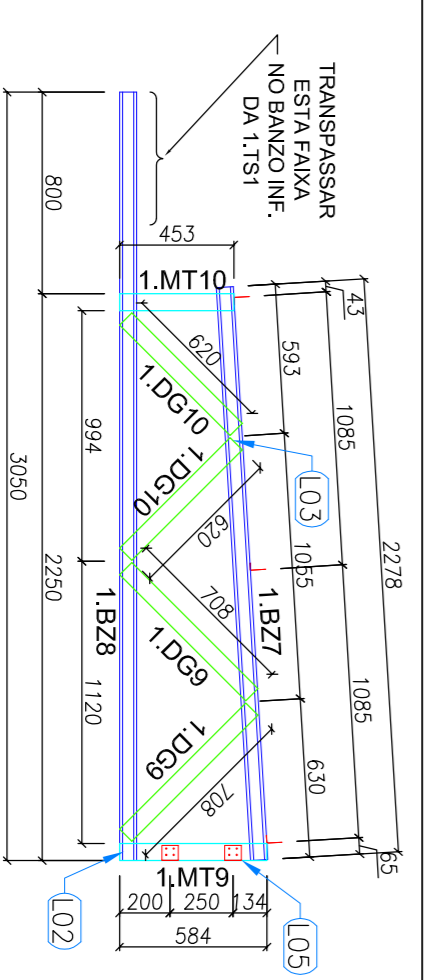
ITEM	TAG	PERFIL	COMP. (mm)	QUANT. (und.)
1	1.BZ1	UE 70	6900	2
2	1.BZ20	UE 70	2873	2
3	1.BZ4	UE 70	5195	2
4	1.BZ5	UE 70	2357	2
5	1.BZ6	UE 70	13320	2
6	1.RF1	TUBO UE 70	135	2
7	1.MT1	TUBO UE 70	860	2
8	1.MT2	TUBO UE 70	452	1
9	1.MT3	TUBO UE 70	174	1
10	1.MT6	TUBO UE 70	554	1
11	1.MT9	TUBO UE 70	256	1
12	1.MT8	TUBO UE 70	1076	4
13	1.DG1	TUBO UE 70	947	4
14	1.DG2	TUBO UE 70	832	4
15	1.DG3	TUBO UE 70	790	3
16	1.DG4	TUBO UE 70	677	2
17	1.DG5	TUBO UE 70	619	2
18	1.DG6	TUBO UE 70	280	1
19	1.DG7	TUBO UE 70	202	1
20	1.DG8	TUBO UE 70	318	2

ITEM	TAG	PERFIL	COMP. (mm)	QUANT. (und.)
1	1.BZ1	UE 70	6900	2
2	1.BZ20	UE 70	2873	2
3	1.BZ4	UE 70	5195	2
4	1.BZ5	UE 70	2357	2
5	1.BZ6	UE 70	13320	2
6	1.RF1	TUBO UE 70	135	2
7	1.MT1	TUBO UE 70	860	2
8	1.MT2	TUBO UE 70	452	1
9	1.MT3	TUBO UE 70	174	1
10	1.MT6	TUBO UE 70	554	1
11	1.MT9	TUBO UE 70	256	1
12	1.MT8	TUBO UE 70	1076	4
13	1.DG1	TUBO UE 70	947	4
14	1.DG2	TUBO UE 70	832	4
15	1.DG3	TUBO UE 70	790	3
16	1.DG4	TUBO UE 70	677	2
17	1.DG5	TUBO UE 70	619	2
18	1.DG6	TUBO UE 70	280	1
19	1.DG7	TUBO UE 70	202	1
20	1.DG8	TUBO UE 70	318	2



VISTA SUPERIOR - BANZOS, CANTONEIRAS e LUVAS

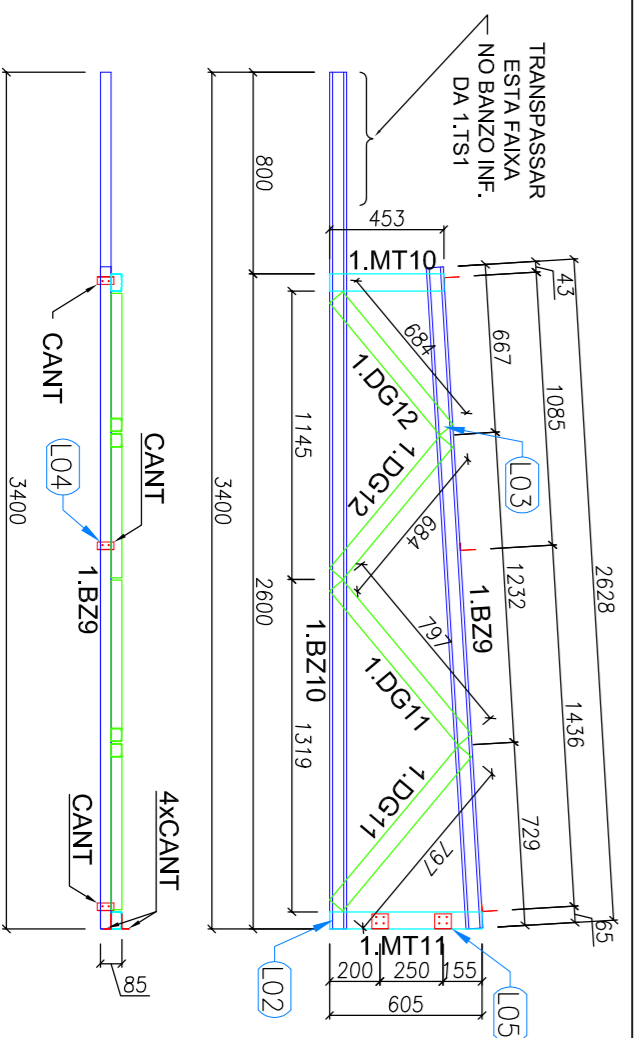
TS2 - (X03) SEM ESCALA



ITEM	TAG	PERFIL	COMP. (mm)	QUANT. (und.)
1	1.BZ7	UE 70	2278	1
2	1.BZ8	TUBO UE 70	3050	1
3	1.MT9	UE 70	594	1
4	1.MT10	UE 70	453	1
5	1.DG9	UE 70	708	2
6	1.DG10	UE 70	620	2

ITEM	TAG	PERFIL	COMP. (mm)	QUANT. (und.)
1	1.BZ7	UE 70	2278	1
2	1.BZ8	TUBO UE 70	3050	1
3	1.MT9	UE 70	594	1
4	1.MT10	UE 70	453	1
5	1.DG9	UE 70	708	2
6	1.DG10	UE 70	620	2

TS3 - (X16) SEM ESCALA



TS4 - (X04) SEM ESCALA

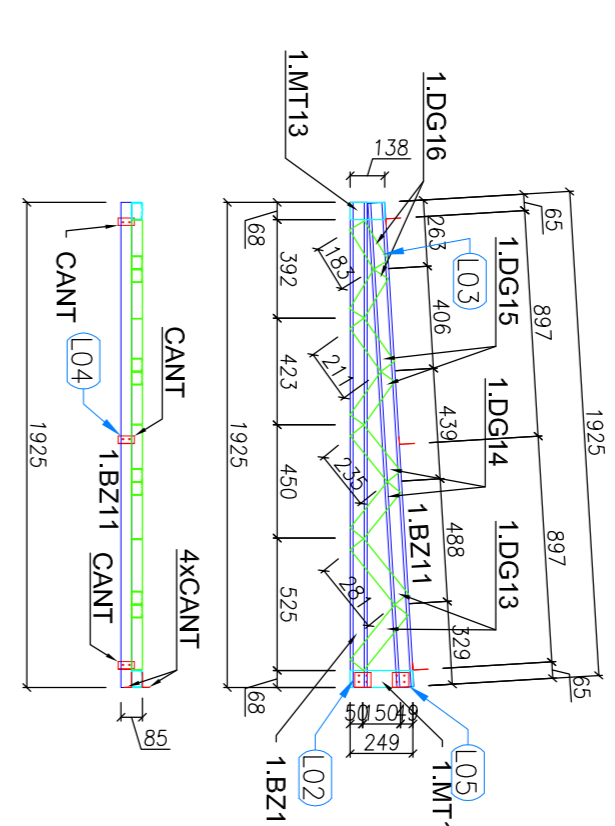
ITEM	TAG	PERFIL	COMP. (mm)	QUANT. (und.)
1	1.BZ9	UE 70	2628	1
2	1.BZ10	UE 70	3400	1
3	1.MT10	UE 70	453	1
4	1.MT11	TUBO UE 70	605	1
5	1.DG11	UE 70	797	2
6	1.DG12	UE 70	684	2

ITEM	TAG	PERFIL	COMP. (mm)	QUANT. (und.)
1	1.BZ9	UE 70	2628	1
2	1.BZ10	UE 70	3400	1
3	1.MT10	UE 70	453	1
4	1.MT11	TUBO UE 70	605	1
5	1.DG11	UE 70	797	2
6	1.DG12	UE 70	684	2

TS4 - (X04) SEM ESCALA

ITEM	TAG	PERFIL	COMP. (mm)	QUANT. (und.)
1	1.BZ11	UE 70	1925	2
2	1.MT12	TUBO UE 70	249	1
3	1.MT13	UE 70	188	1
4	1.DG13	UE 70	281	2
5	1.DG14	UE 70	235	2
6	1.DG15	UE 70	211	2
7	1.DG16	UE 70	183	2

TS5 - (X02) SEM ESCALA



PROJETO PADRÃO - FNDE

PROPRIETÁRIO: \_\_\_\_\_  
 ENDEREÇO: \_\_\_\_\_  
 MUNICÍPIO - UF: \_\_\_\_\_  
 PROPRIETÁRIO: \_\_\_\_\_  
 RESP. TÉCNICO: \_\_\_\_\_  
 AUTOR DO PROJETO: \_\_\_\_\_  
 DIFEO: \_\_\_\_\_  
 OBSERVAÇÕES: \_\_\_\_\_

PROGRAMA PROINFÂNCIA - PROJETO TIPO 1  
 PROJETO DE ESTRUTURA

CONSERVADOR: \_\_\_\_\_  
 COGESTOR - Coordenação Geral de Infraestrutura Educacional: \_\_\_\_\_  
 ESTRUTURA METÁLICA  
 AMPLIAÇÕES DAS TESSOURAS  
 TS1, TS2, TS3, TS4, TS5

REVISÃO: R40  
 DATA EMISSÃO: JULHO 2016  
 PRONÓIA: 06/12