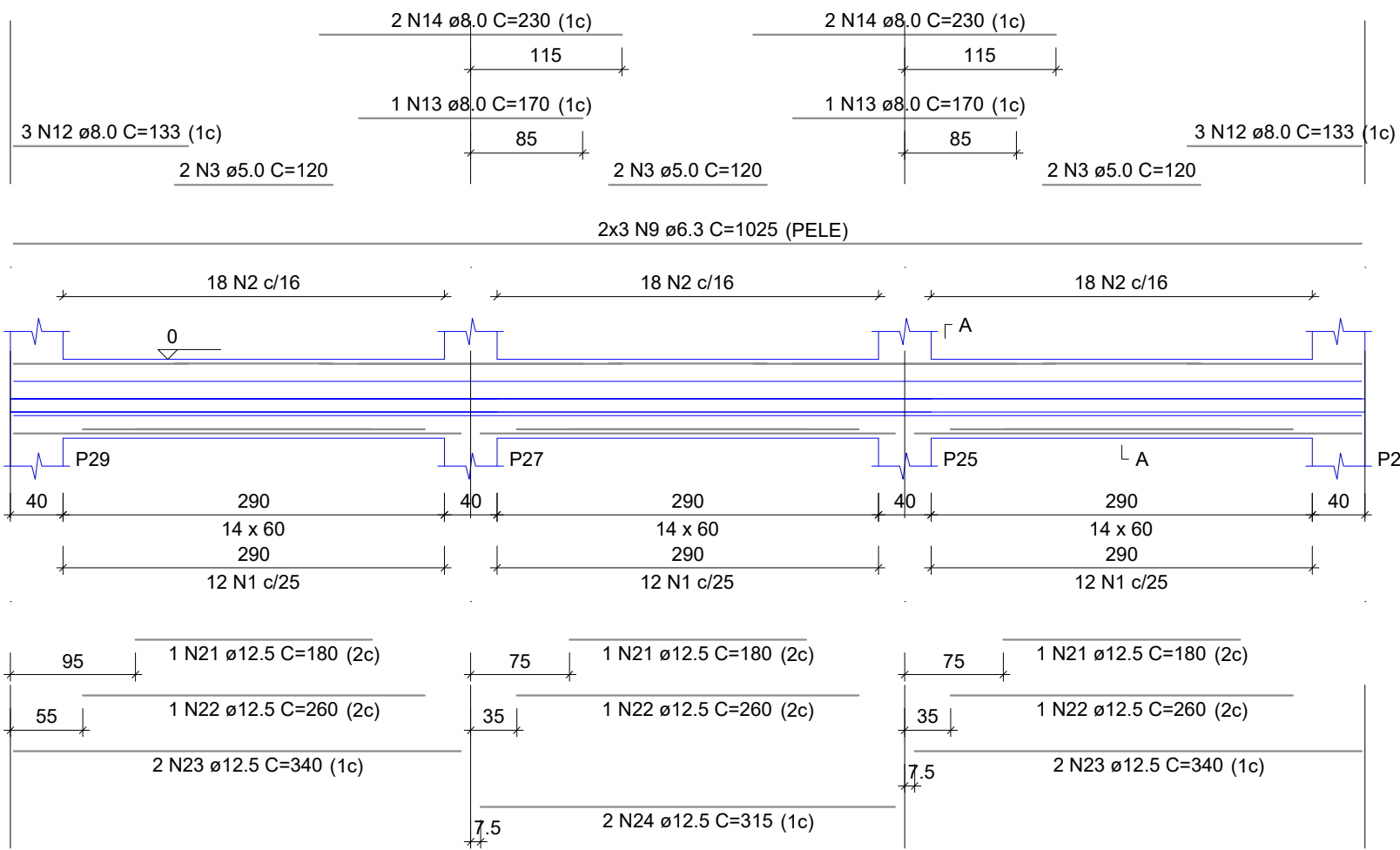


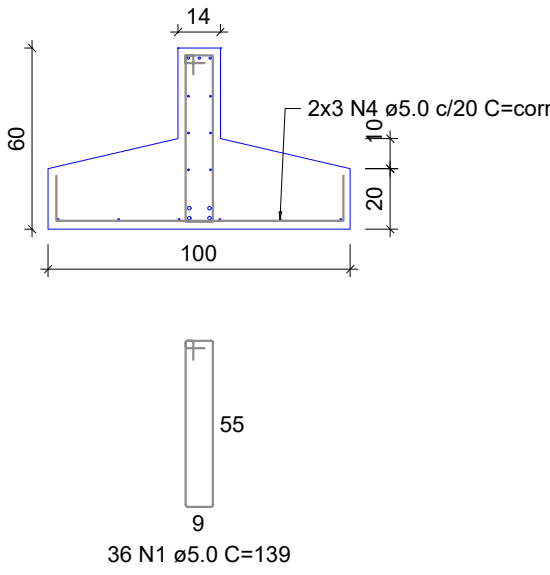
V8

ESC 1:50



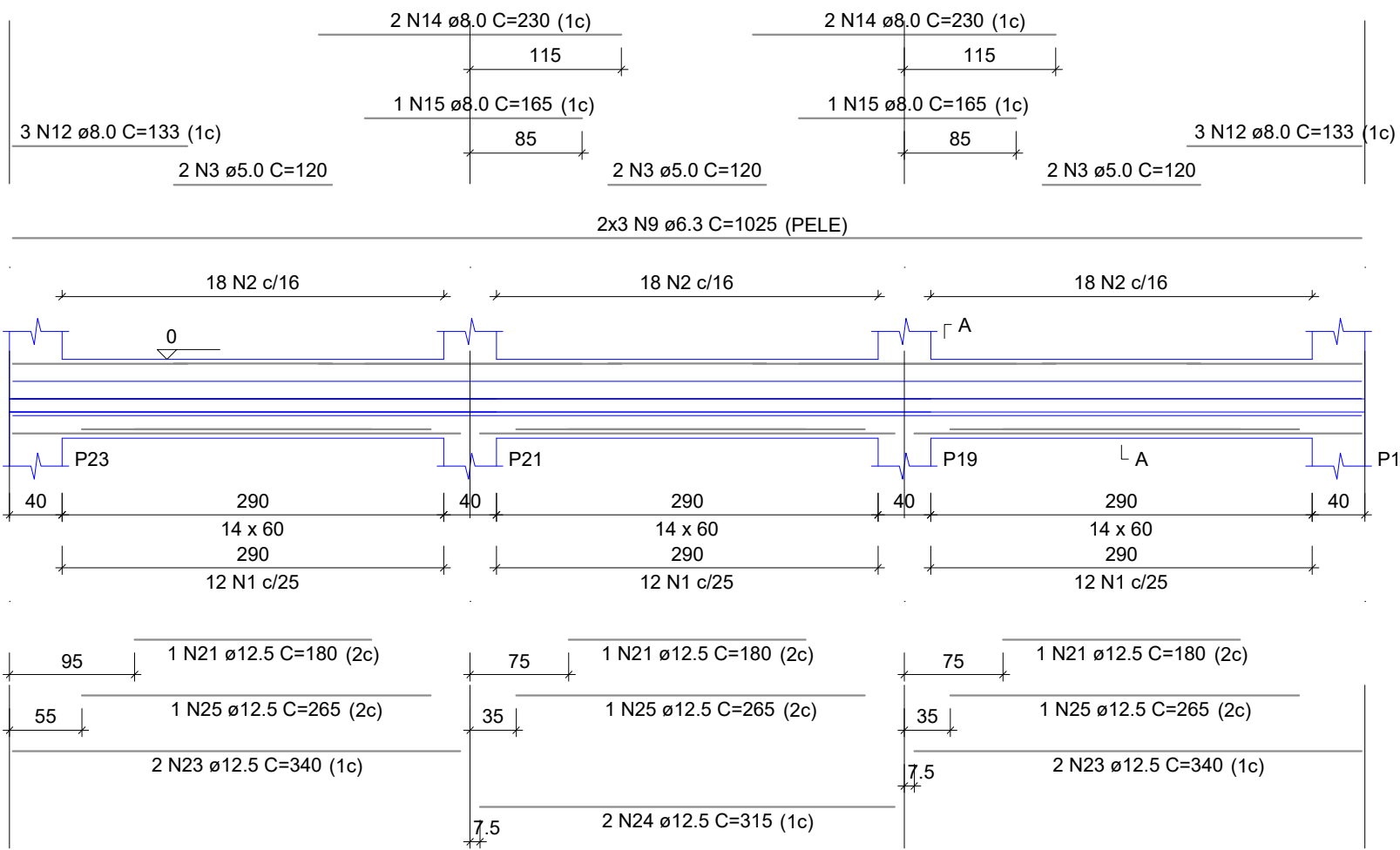
SEÇÃO A-A

ESC 1:25



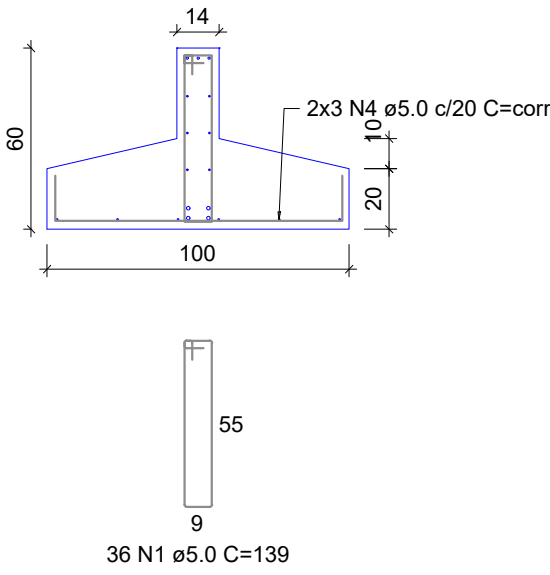
V9

ESC 1:50



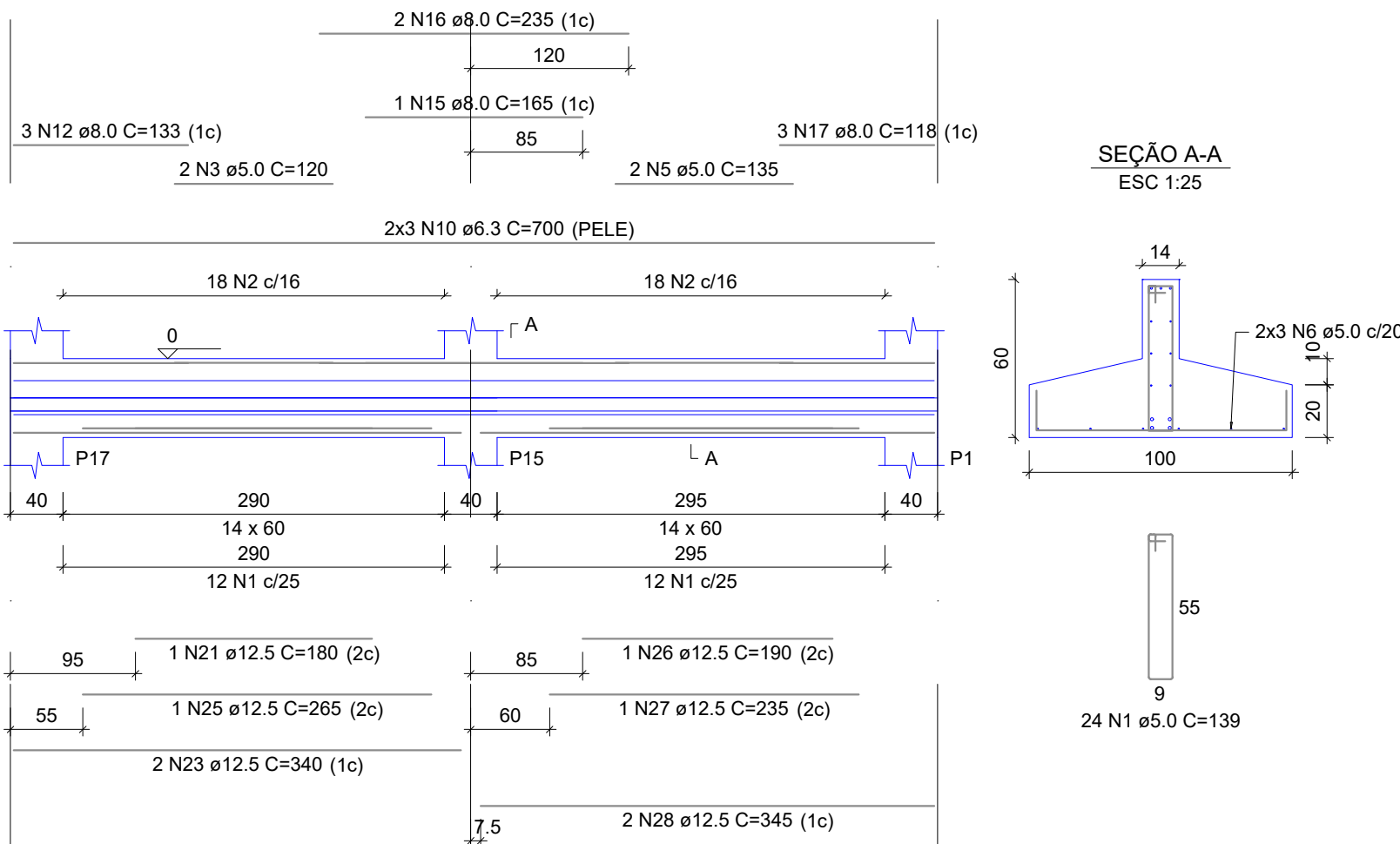
SEÇÃO A-A

ESC 1:25



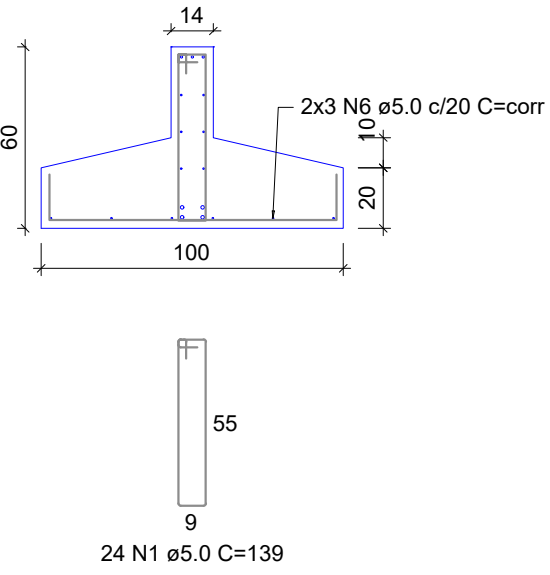
V10

ESC 1:50



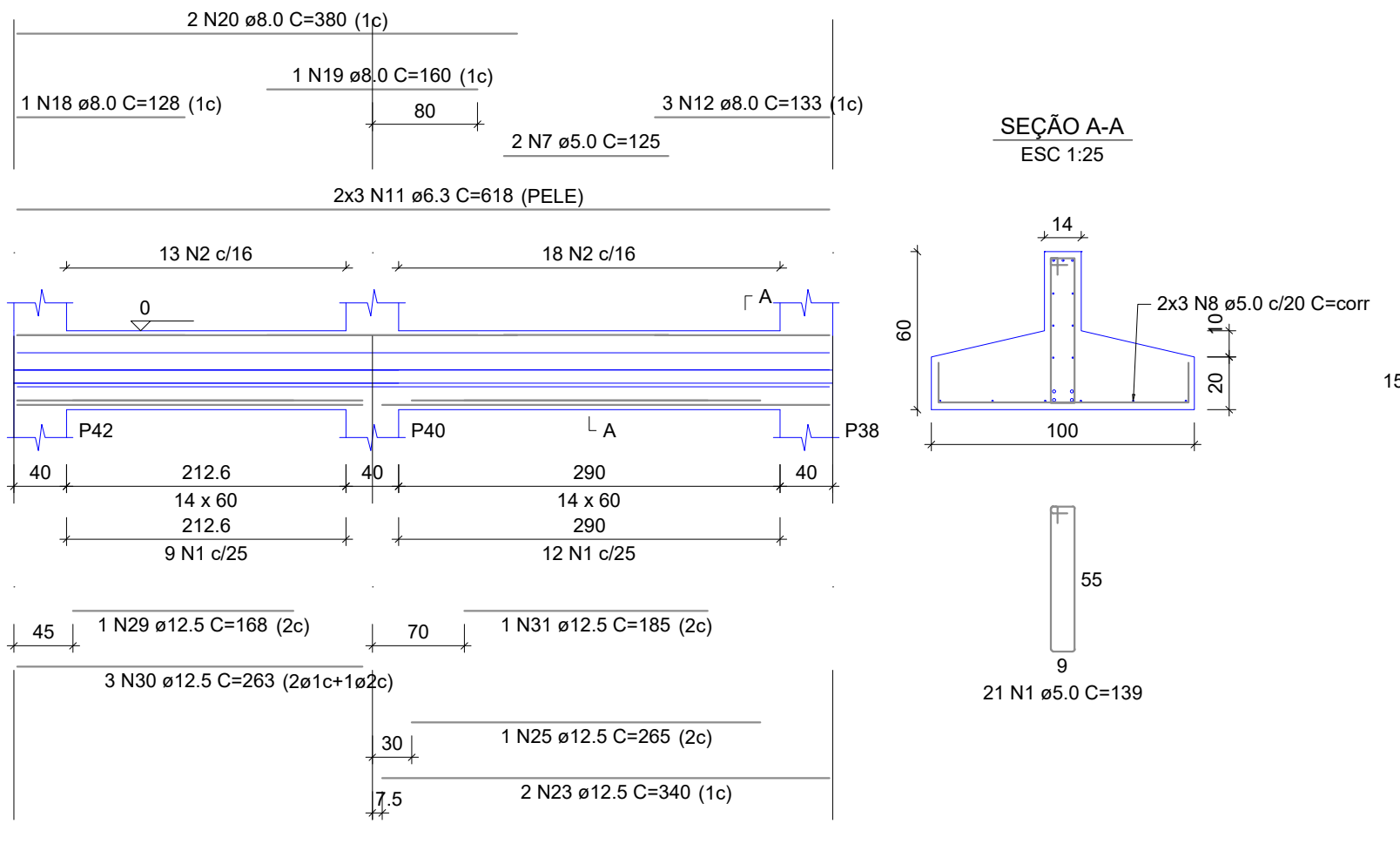
SEÇÃO A-A

ESC 1:25



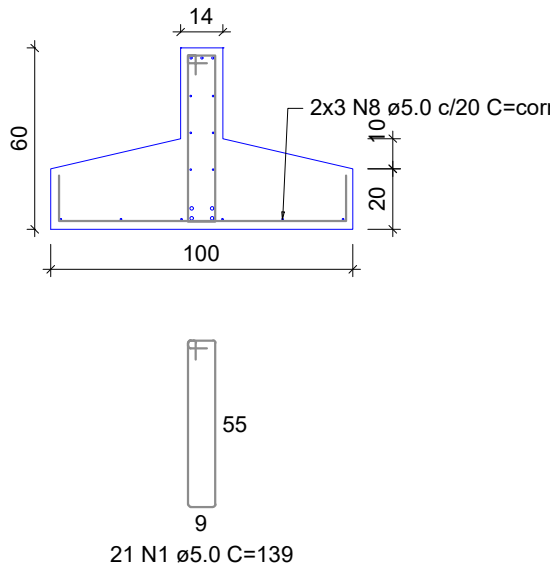
V11

ESC 1:50



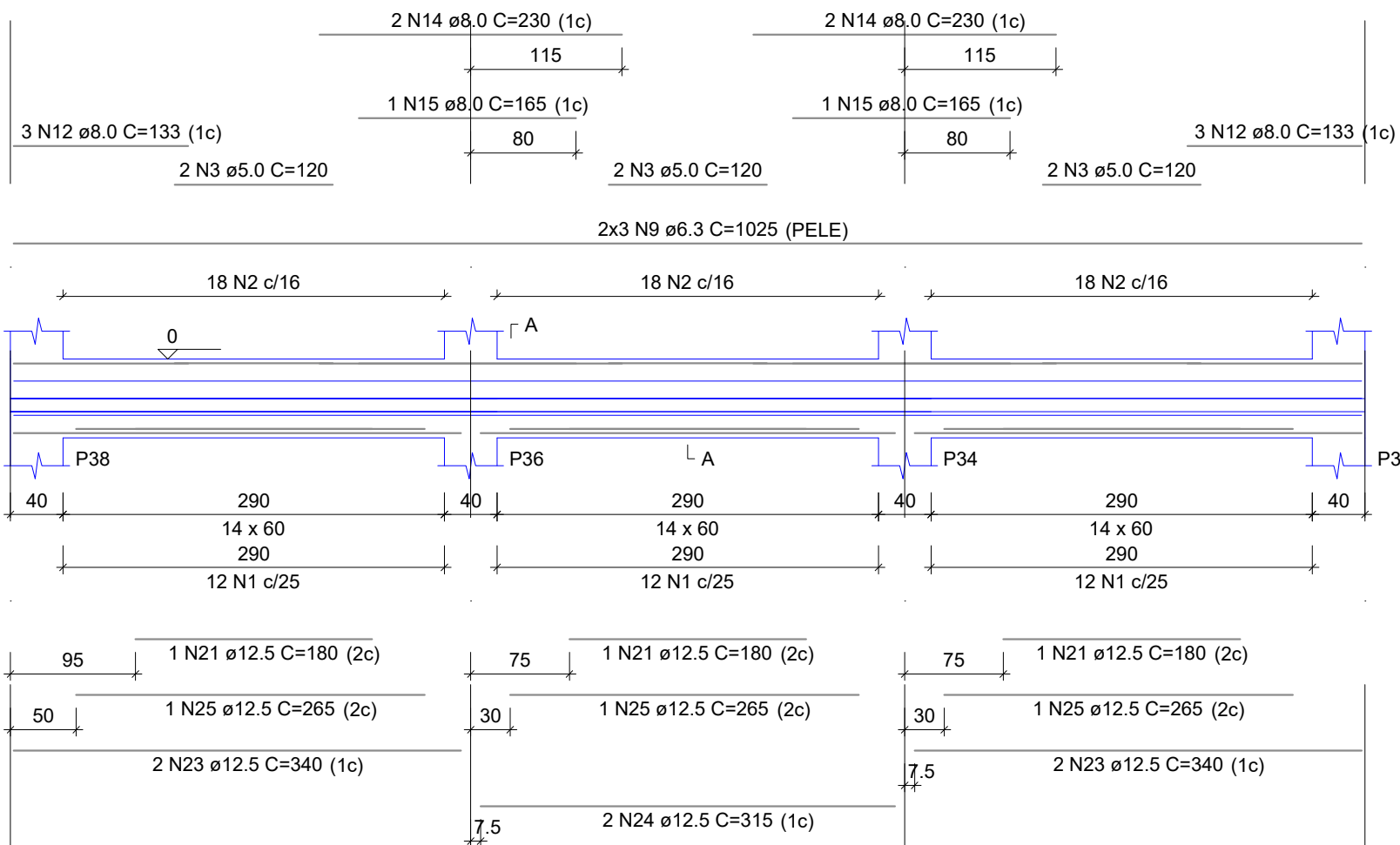
SEÇÃO A-A

ESC 1:25



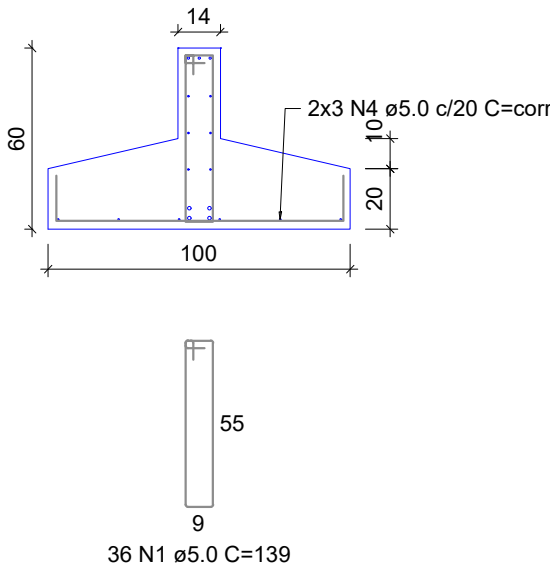
V12

ESC 1:50



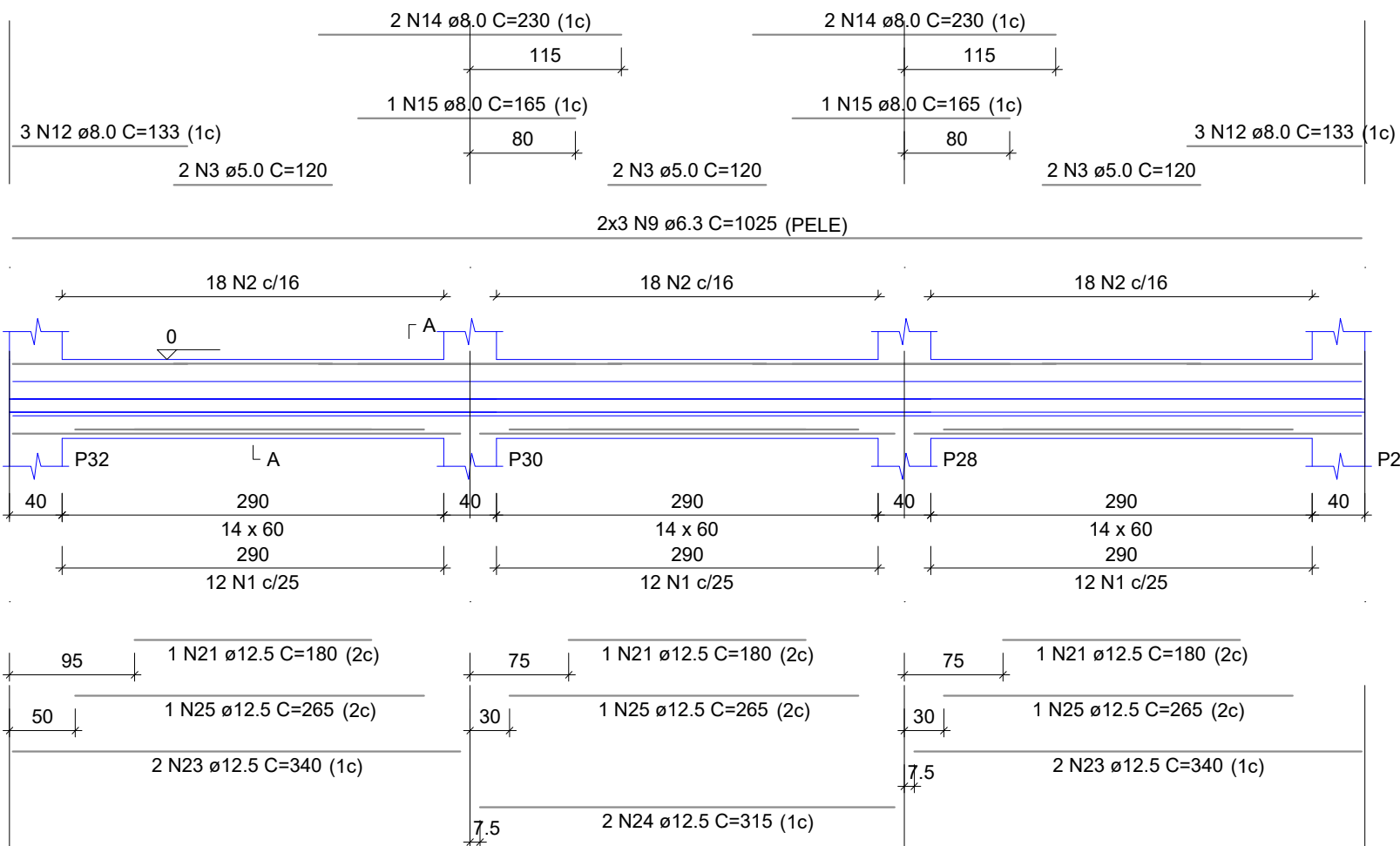
SEÇÃO A-A

ESC 1:25



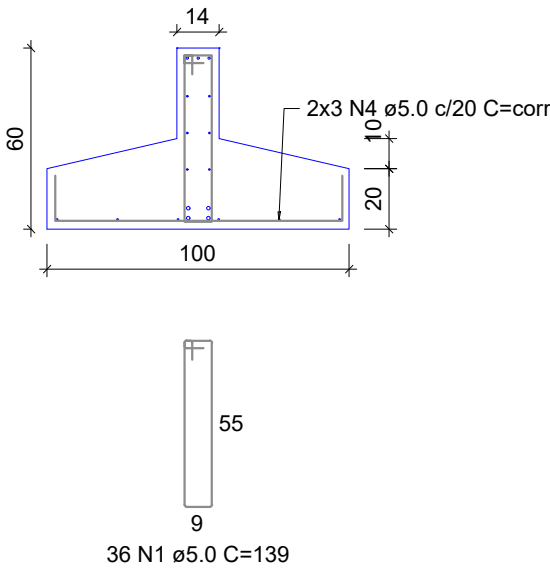
V13

ESC 1:50



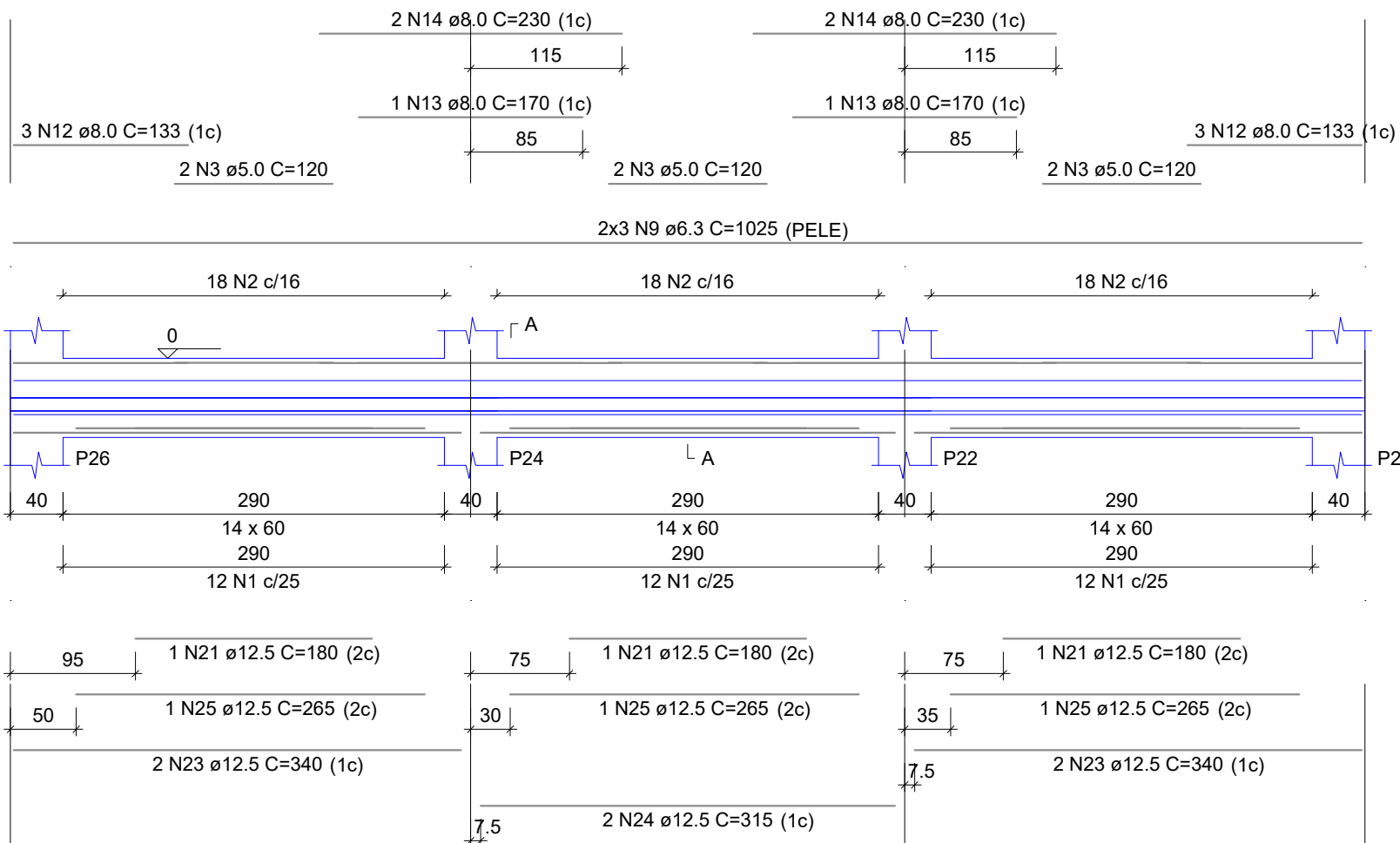
SEÇÃO A-A

ESC 1:25



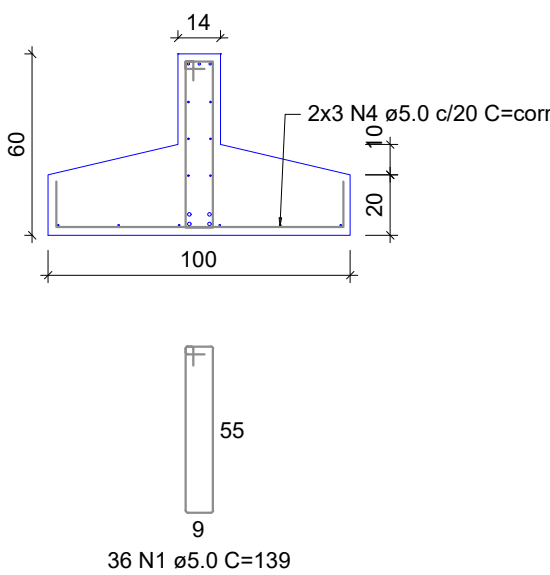
V14

ESC 1:50



SEÇÃO A-A

ESC 1:25



RELAÇÃO DO AÇO

AÇO	N	DIAM (mm)	QUANT	C.UNIT (cm)	C.TOTAL (cm)
CA60	1	5.0	225	139	31275
	2	5.0	337	122	41114
	3	5.0	32	120	3840
	4	5.0	30	corr	30750
	5	5.0	2	135	270
	6	5.0	6	corr	4200
	7	5.0	2	125	250
	8	5.0	6	corr	3708
	9	6.3	30	1025	30750
	10	6.3	6	700	4200
CA50	11	6.3	6	618	3708
	12	8.0	36	133	4788
	13	8.0	4	170	680
	14	8.0	26	230	4600
	15	8.0	7	165	1155
	16	8.0	2	235	470
	17	8.0	3	118	354
	18	8.0	1	128	128
	19	8.0	1	160	160
	20	8.0	2	380	760
	21	12.5	16	180	2880
	22	12.5	3	260	780
	23	12.5	24	340	8160
	24	12.5	10	315	3150
	25	12.5	14	265	3710
	26	12.5	1	190	190
	27	12.5	1	235	235
	28	12.5	2	345	690
	29	12.5	1	168	168
	30	12.5	3	263	789
	31	12.5	1	185	185

RESUMO DO AÇO

AÇO	DIAM (mm)	C.TOTAL (m)	PESO + 10% (kg)
CA50	6.3	386.6	104.1
	8.0	130.9	56.8
	12.5	209.4	221.9
CA60	5.0	1154.1	195.7
	PESO TOTAL (kg)		
	CA50	382.8	
	CA60	195.7	

Volume de concreto (C-30) = 16.26 m³

Área de forma = 54.38 m²